

Raleigh-Durham Airport Authority 2015 Business Opportunity Expo

April 1, 2015



Facility Asset Management Division



Facility Asset Management



Building and Building Systems Project Work

- Generator repair and maintenance
- Authority Administrative Building repair and maintenance
- Observation Park
- General Aviation Terminal

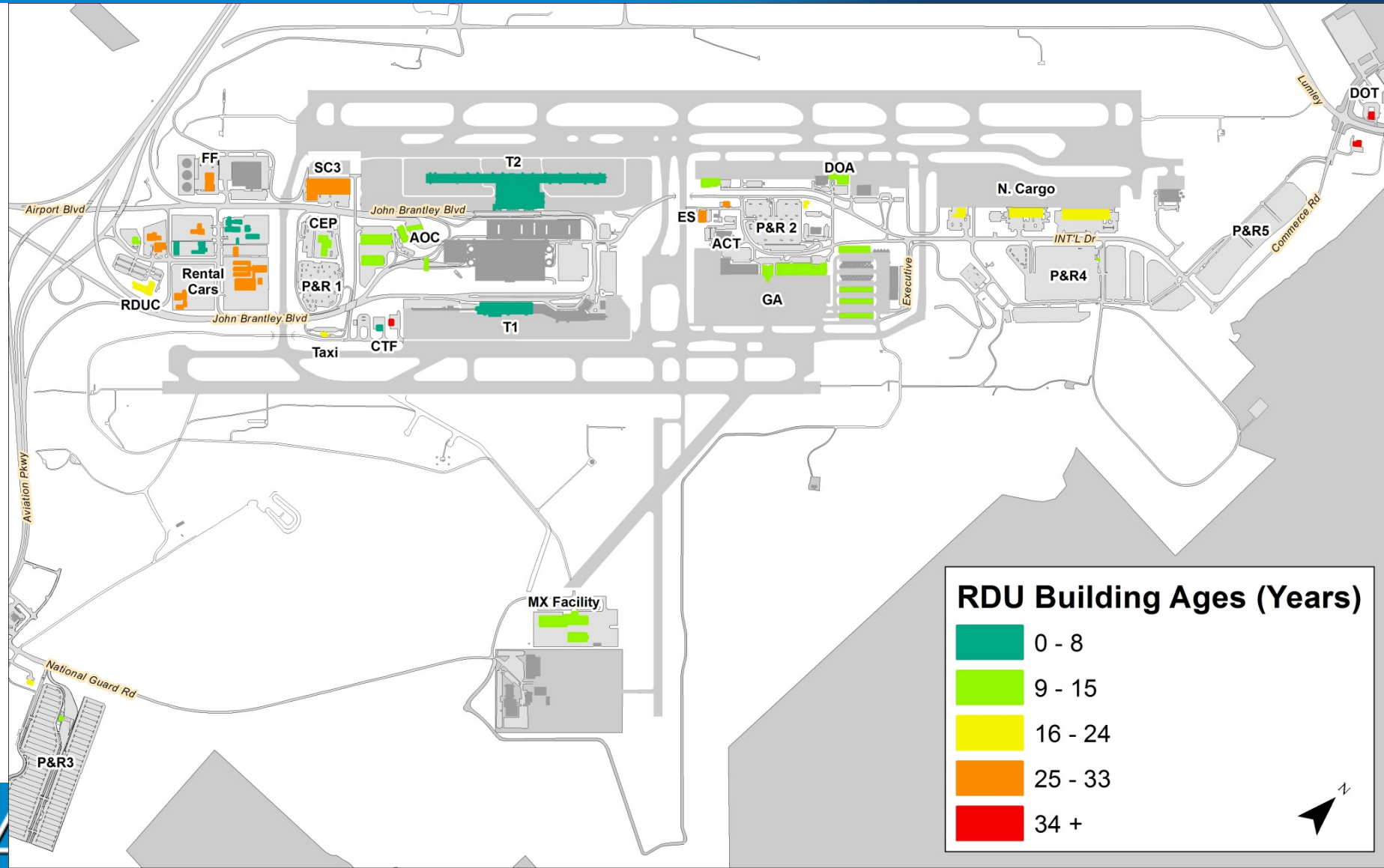


Building and Building Systems Project Work

- South Cargo #3
- Park and Ride Lot 3 Office
- Emergency Services Station
- Terminal 2



Building and Building Systems Project Work

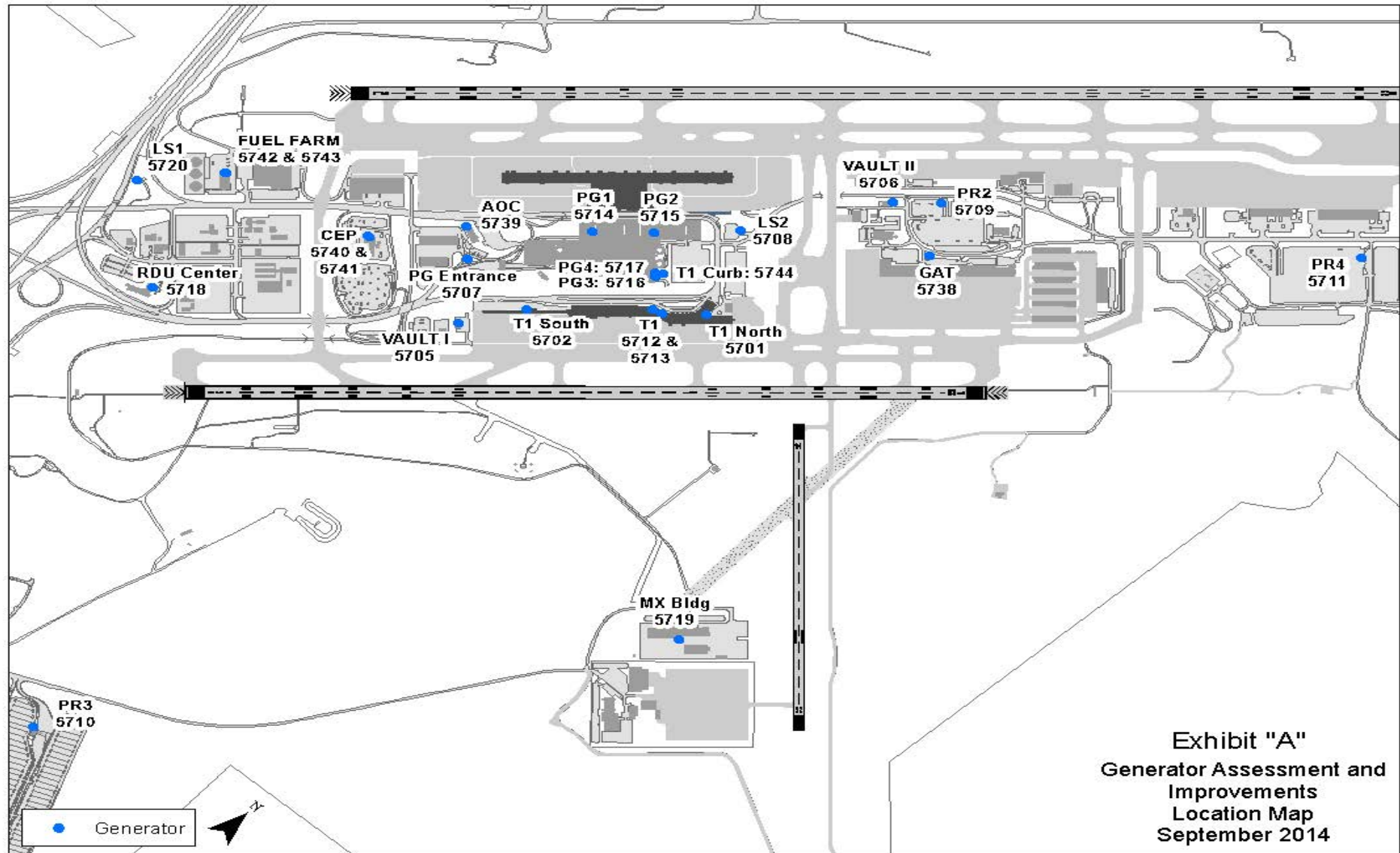


Generator Repair and Maintenance

Repair and maintenance work on 23 generator units owned, operated, and maintained by the Airport



Generator Repair and Maintenance



Authority Administrative Building

Repair and maintenance of RDU Center:

- Roof replacement (22,000 sf)
including replacement of balcony, roof expansion joints, metal coping, reseal and replace flashings and reseal building penetrations (doors, windows, metal panels) 23,000+ parking spaces (deck and surface)



Authority Administrative Building

- Replace carpeting (22,000 sf)
- Replace carpeting Repair and/or replace HVAC system and piping treat microbial growth as required
- Address ADA items
- Provide new FFE in offices
- Perform arc flash testing of electrical panels



Observation Park & GA Terminal

Observation Park

- Replace decking on platform and ramp/steps
- Replace doors and minor improvements to restrooms

General Aviation Terminal

- Replace and reseal balcony
- Repair work on ceilings, insulation, and other work



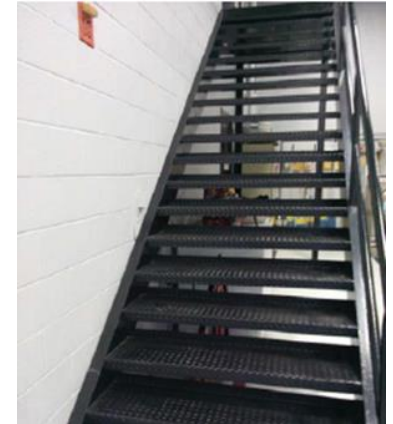
Park and Ride Lot 3 Office

- Improve site drainage around building perimeter
- Treat microbial growth as required
- Replace HVAC unit
- Clean HVAC duct work
- Perform arc flash testing of electrical panels



Emergency Services Station

- Replace interior finishes including flooring, case work, paint, etc.
- Replace non-ADA compliant stairway
- Reseal windows and doors
- Install GCFI outlets
- Perform arc flash testing of electrical panels



Terminal 2

- Replace mirrors and restroom lavatory sink supports
- Perform arc flash testing of electrical panels



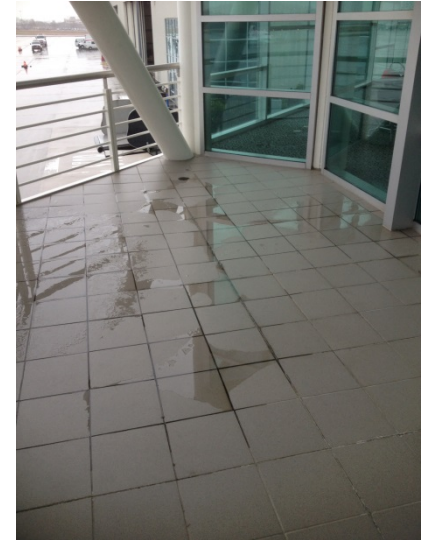
Building and Building Systems Project Work

How?

Expected to be bid in single bid package

When?

Expected to be bid by August 2015



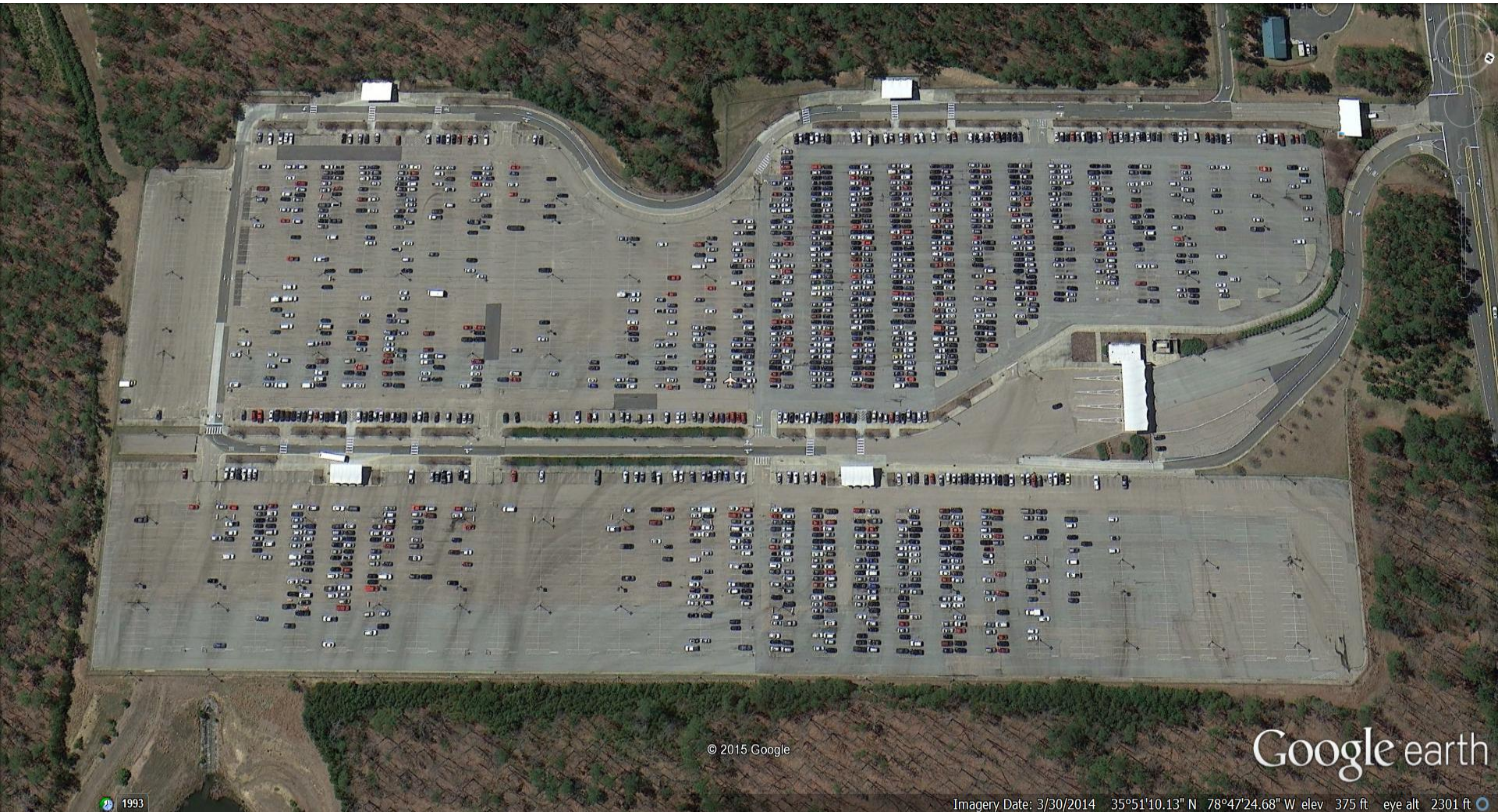
Facilities/ Engineering Project

- Refurbishment of signs at Park and Ride Lot 3
- Signing and railing work at Terminal I
- Resurfacing and/or repairs of various roadway, airfield pavements, and parking lots in secured and non-secured areas of Airport

Facilities/ Engineering Project

- Repaint pavement marking on various roadway, airfield pavements, and parking lots
- Improvements to surface and underground storm water drainage systems
- Repairs to grounds and erosion control devices
- Replace lighting fixtures in high mast assemblies

Park and Ride Lot 3- Signage



© 2015 Google

Google earth

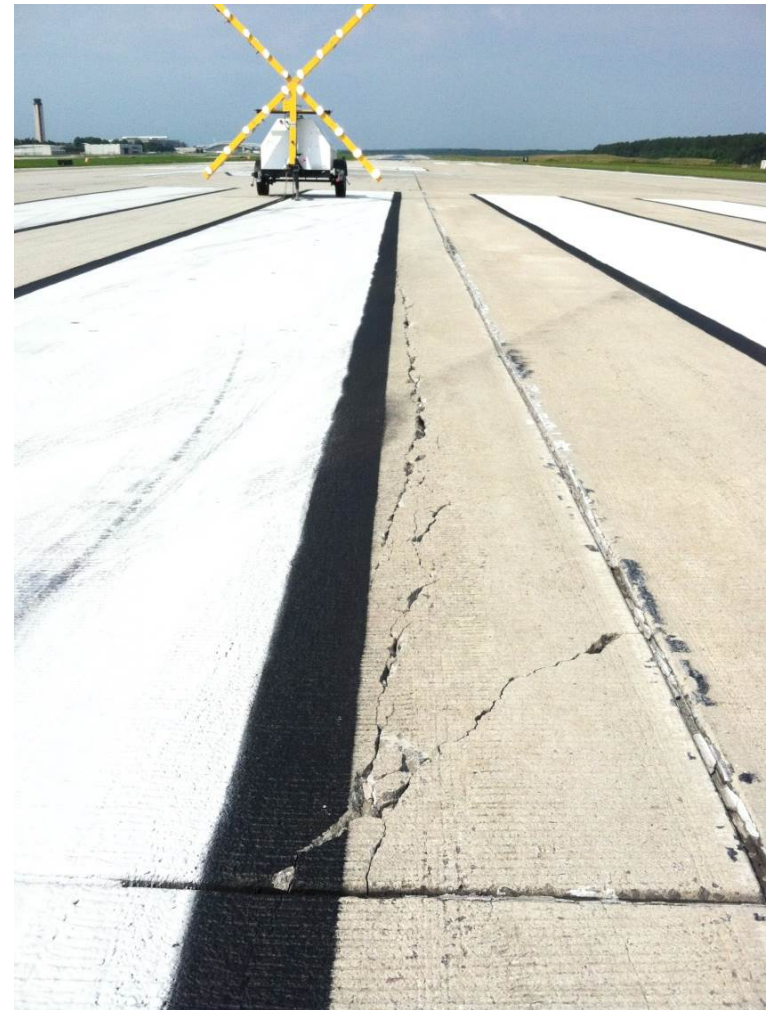
Imagery Date: 3/30/2014 35°51'10.13" N 78°47'24.68" W elev 375 ft eye alt 2301 ft

1993

Terminal 1- Exterior Signage & Railing Improvements



Airfield Pavement Repairs



Facilities/ Engineering Project



Drainage
Improvements

Erosion Control



Facility Asset Management



Luminaire Ring

High Mast Pole



Building and Building Systems Project Work

How?

Several bid packages
expected

When?

Expected to be bid by
August 2015



Terminal 1 North & South Concourse Demolition



T1 Demo - Major Project Elements

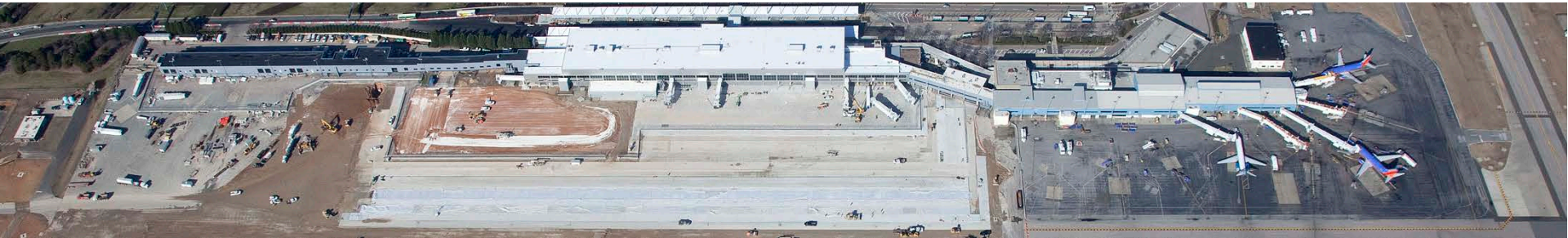
- Demolition of the T1 North and South Concourses
- Modifications to T1 Main (the renovated portion of the building) resulting from removal of the North and South Concourses.
- Functional improvements to T1 Main that are facilitated by removal of the North and South Concourses

T1 Demo - Project Elements

- Restoration of the site and site infrastructure improvements
- Relocation of the airport rotating beacon, an aeronautical navigational aid
- Demolition of Former Hangar Adjacent To Terminal I North

T1 Demo - Compatibility

The North & South Concourse Demolition Project will be designed to be compatible with a future project, Terminal I Bypass Roadway Project, for which the conceptual design was completed in 2010







South Concourse

This aerial photograph shows the layout of Terminal I at Raleigh-Durham International Airport. The terminal is divided into a South Concourse (left) and a North Concourse (right), both highlighted with yellow boxes. The South Concourse is currently under construction, with a large, flat, light-colored roof area. The North Concourse is a completed, long building with a dark roof, featuring several aircraft parked at gates along its side. Between the two concourses is a large parking lot filled with cars. To the north of the parking lot is a large, multi-story building with a grey roof and several circular structures. The foreground shows a wide, multi-lane road with white lane markings. The background includes more airport infrastructure, including runways and taxiways.

North Concourse

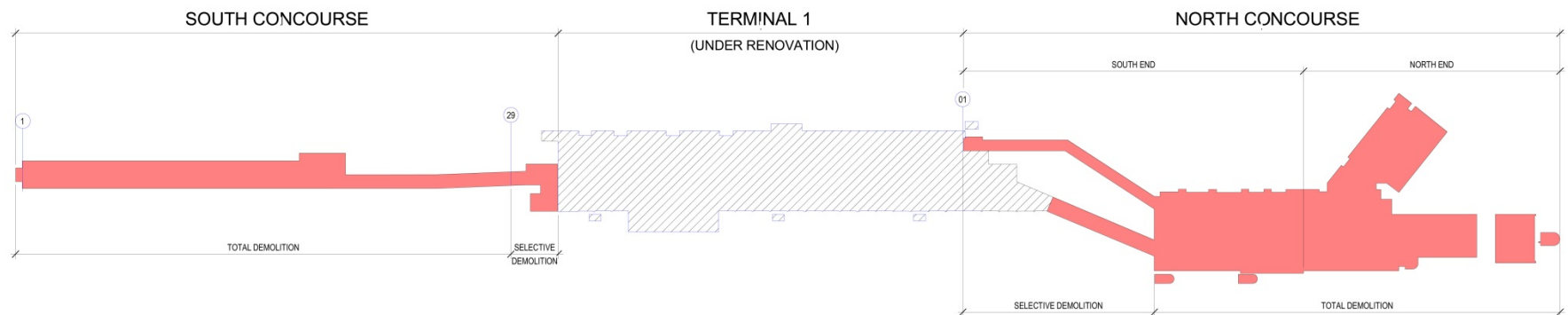




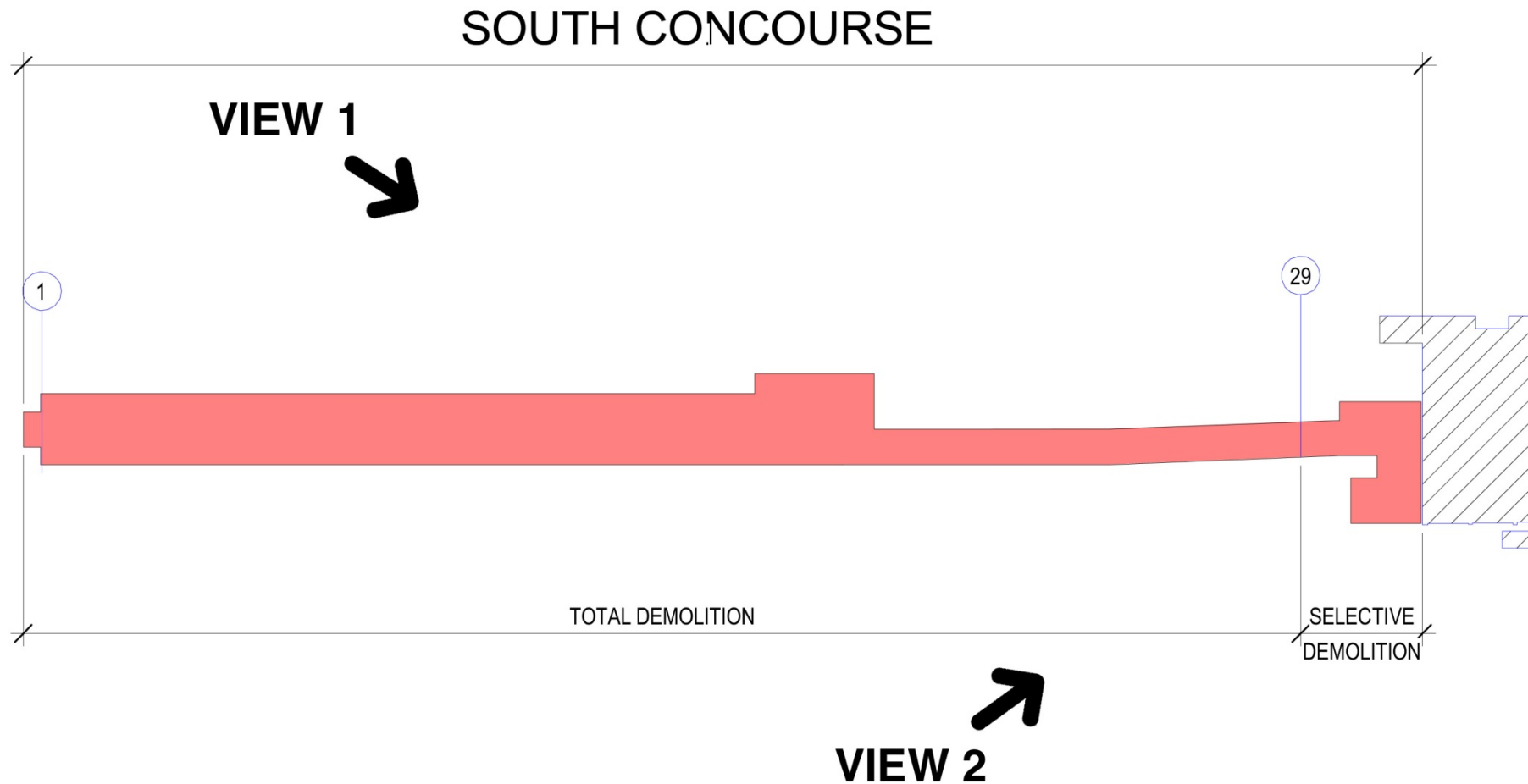
South Concourse

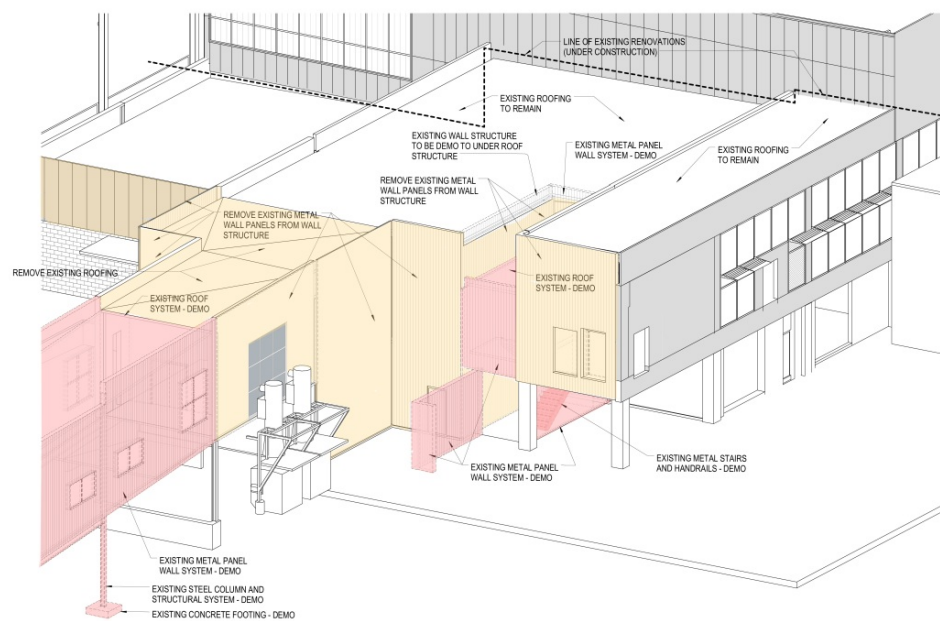
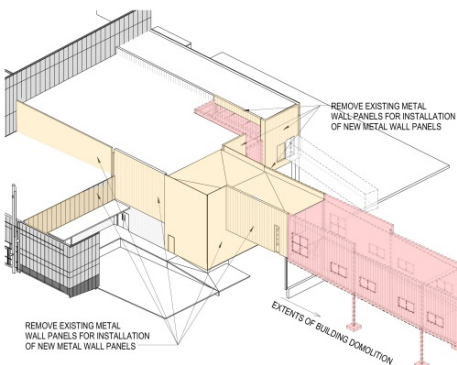
This is an aerial photograph of an airport terminal complex. The main terminal building is a long, rectangular structure with a grey roof and several large, circular, white ventilation units. To the north of the main terminal is a smaller building with a blue roof. To the south is a large, rectangular building with a white roof, which is the South Concourse, highlighted by a yellow box. The South Concourse is surrounded by construction equipment and materials, indicating it is under construction or recently completed. To the east of the main terminal is a large parking lot filled with cars. To the west is a road with a roundabout. In the foreground, there is a wide, multi-lane road. The background shows more airport infrastructure, including runways and taxiways.

T1 North & South Concourse



T1 South Concourse



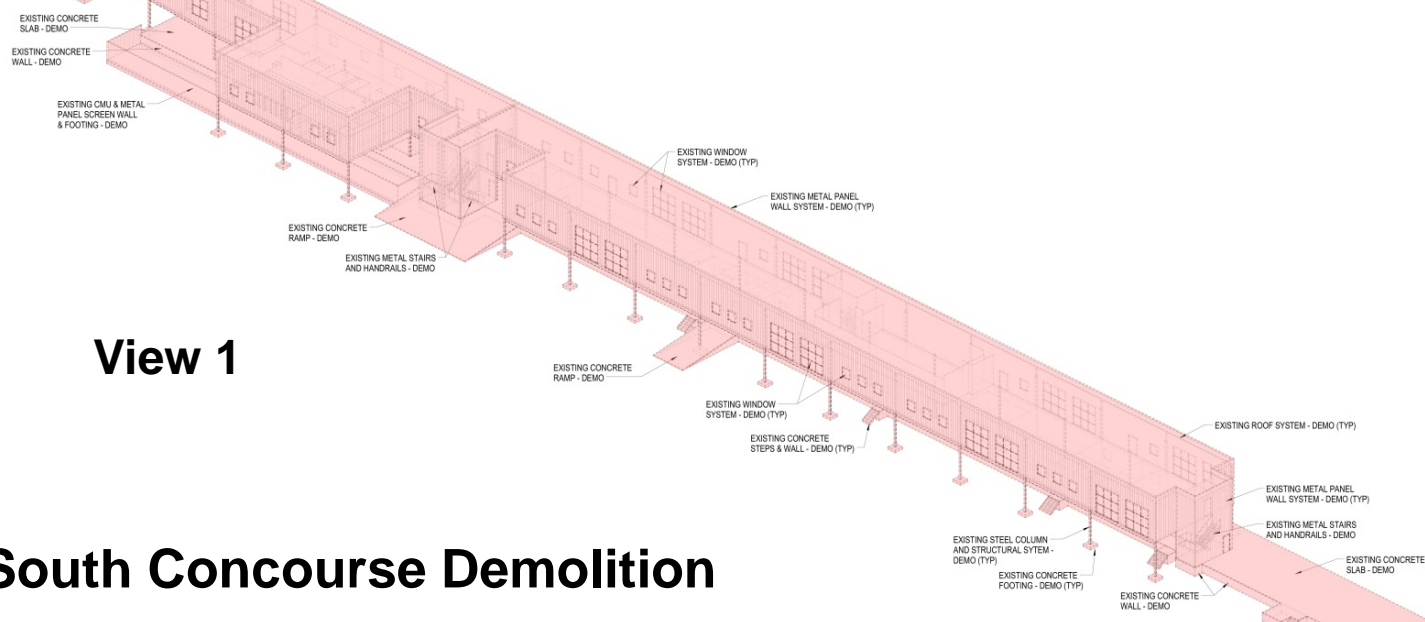


2 SOUTH CONCOURSE - 3D - DEMO AT MAIN BUILDING

View 2

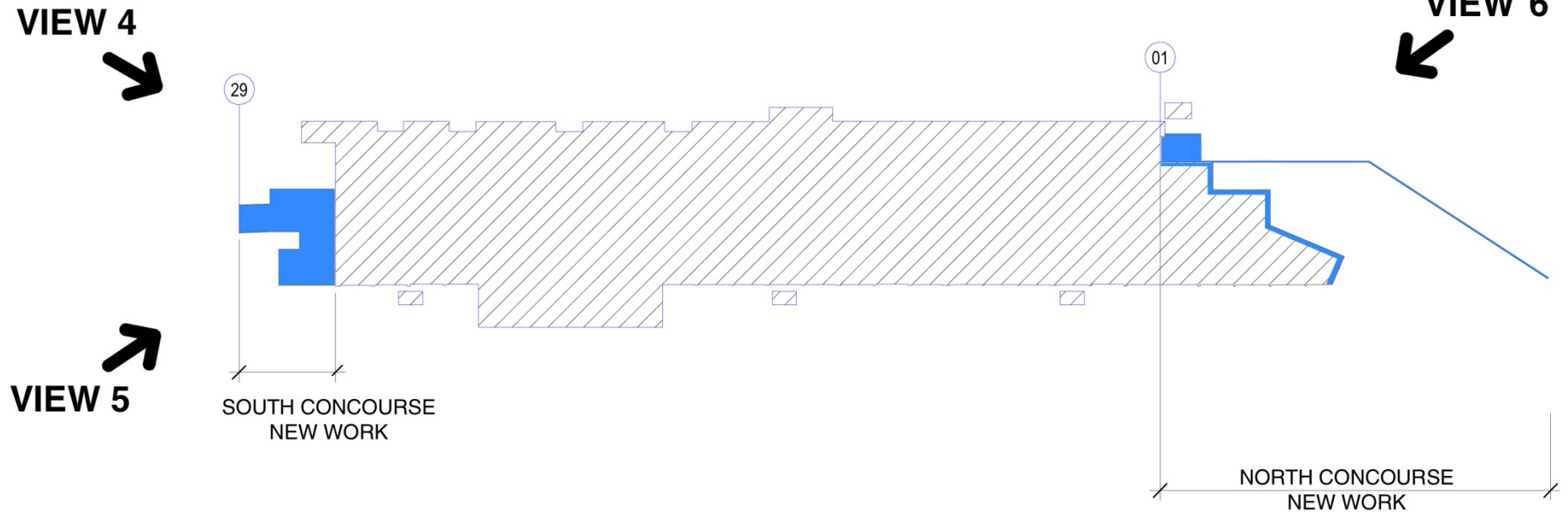
View 1

South Concourse Demolition

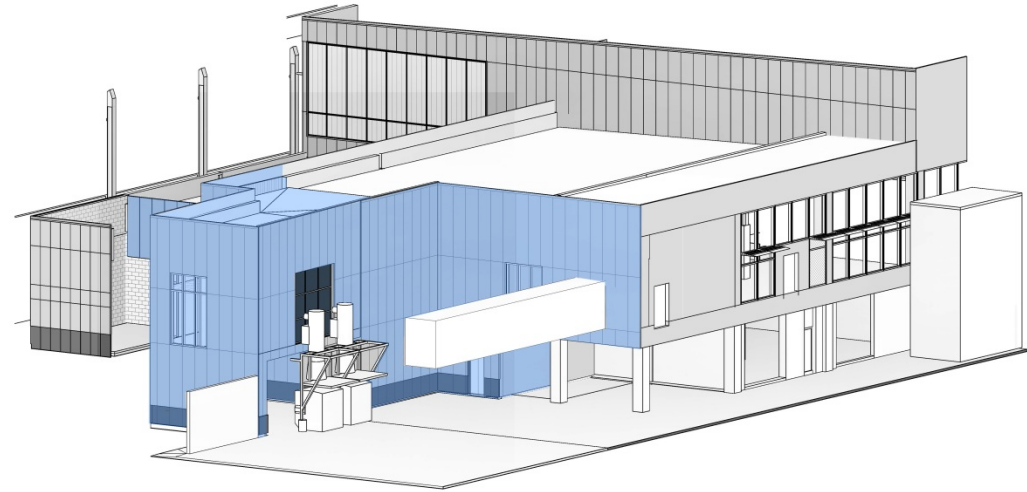


Terminal 1

TERMINAL 1

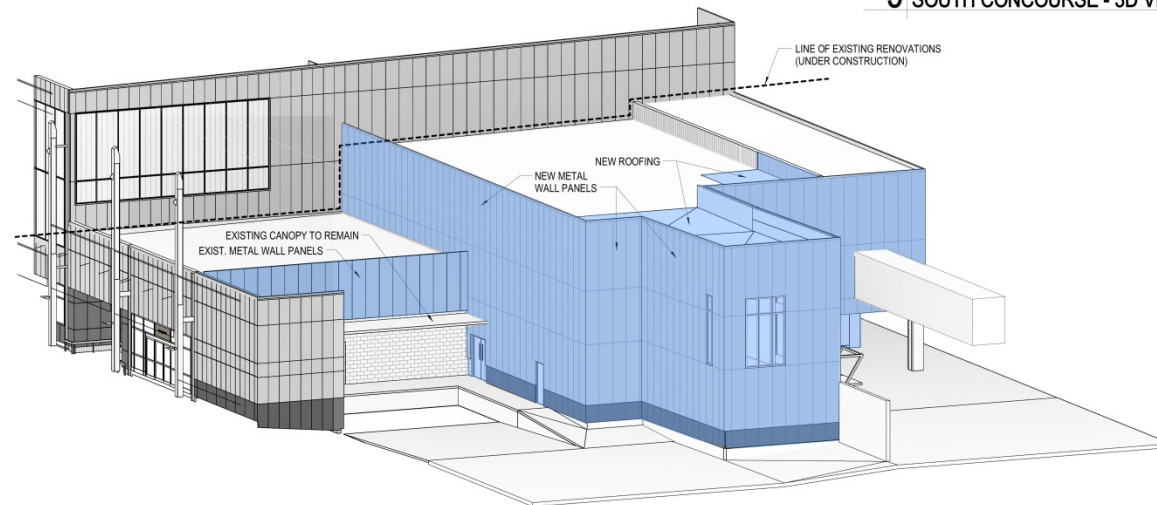


Terminal 1 Modifications – South



5 SOUTH CONCOURSE - 3D VIEW - NEW AIR SIDE

View 5

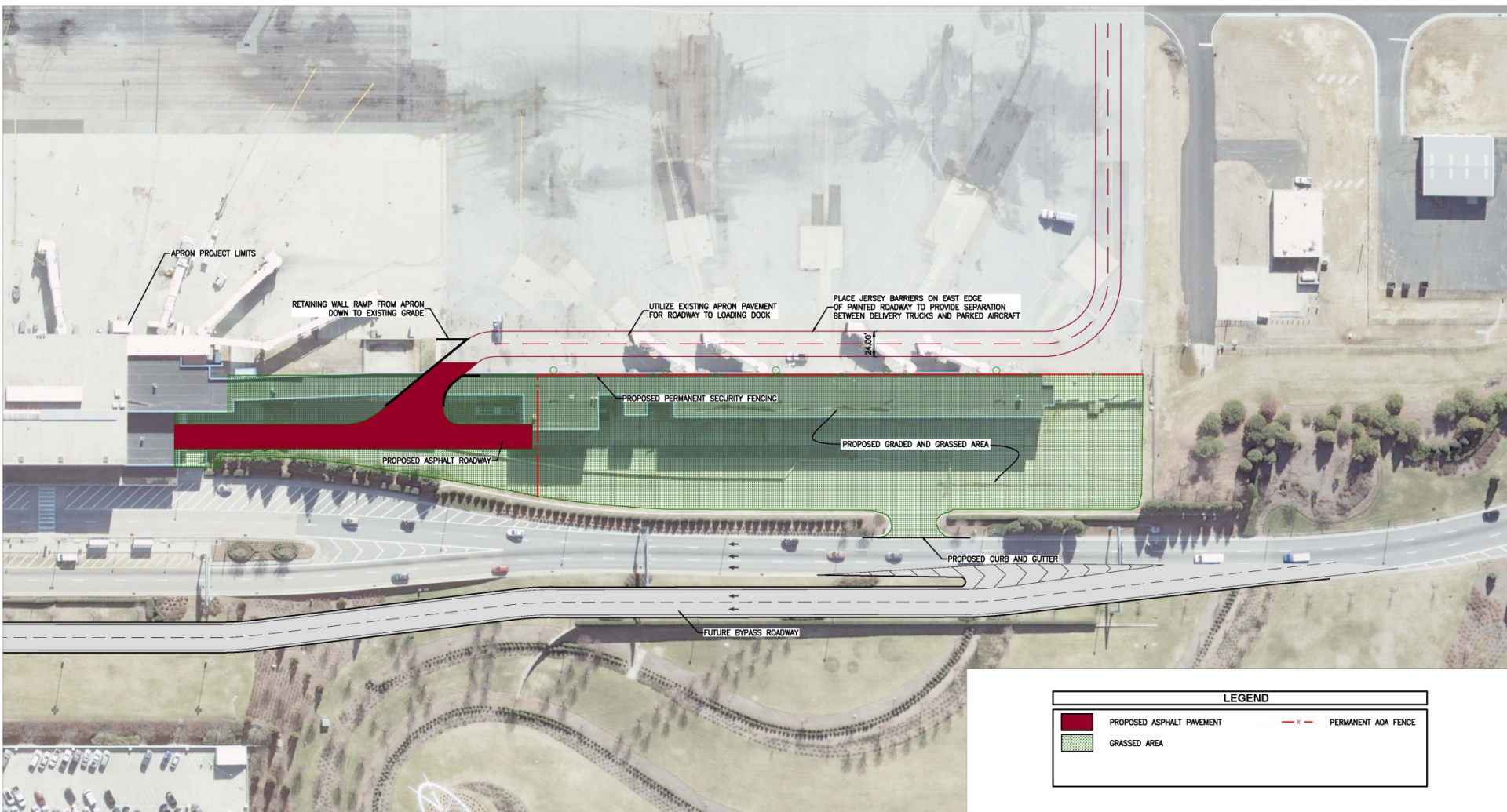


4 SOUTH CONCOURSE - 3D VIEW - NEW

View 4

Terminal 1 Modifications (South)

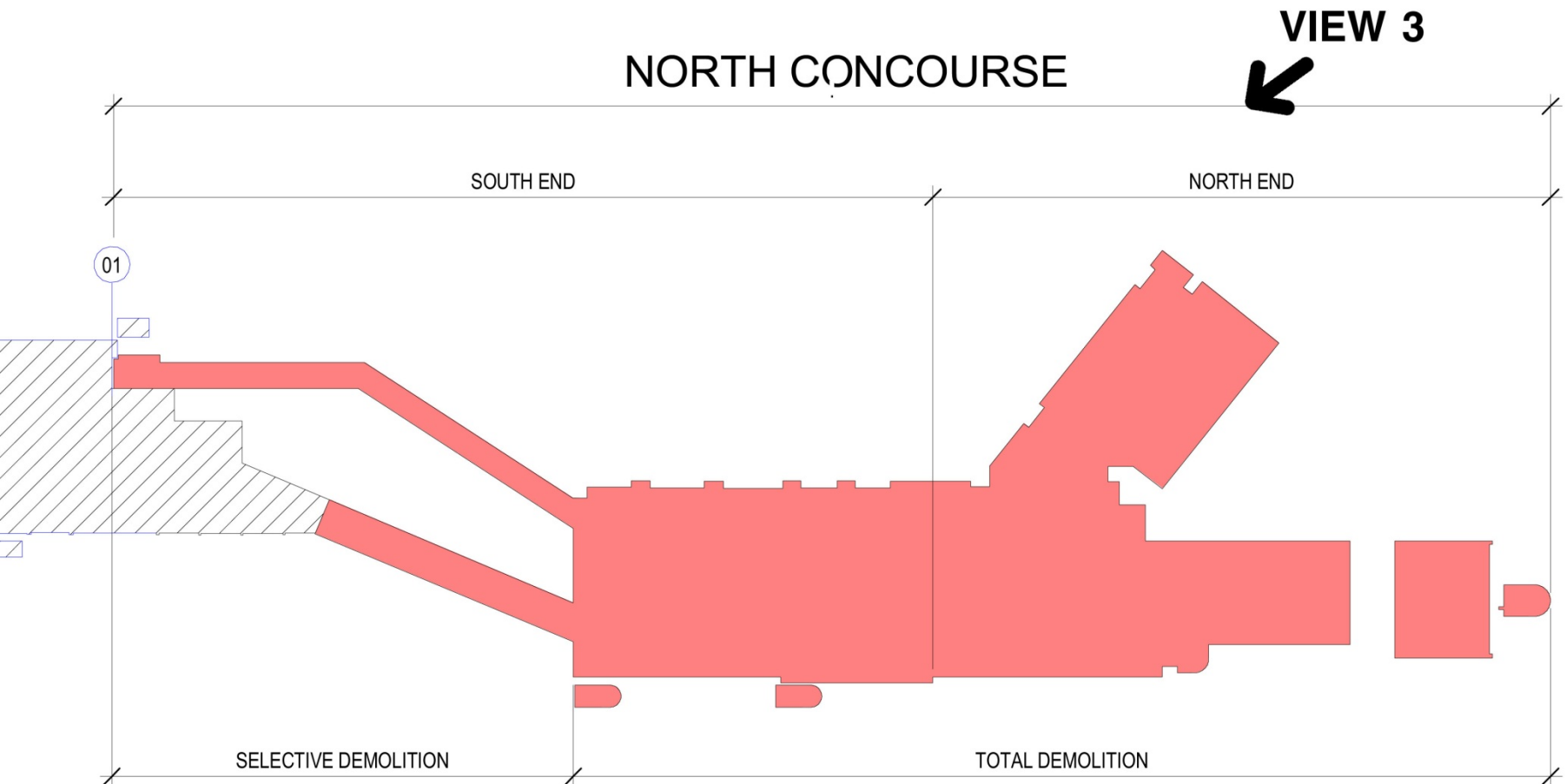
South Concourse Area Site Work



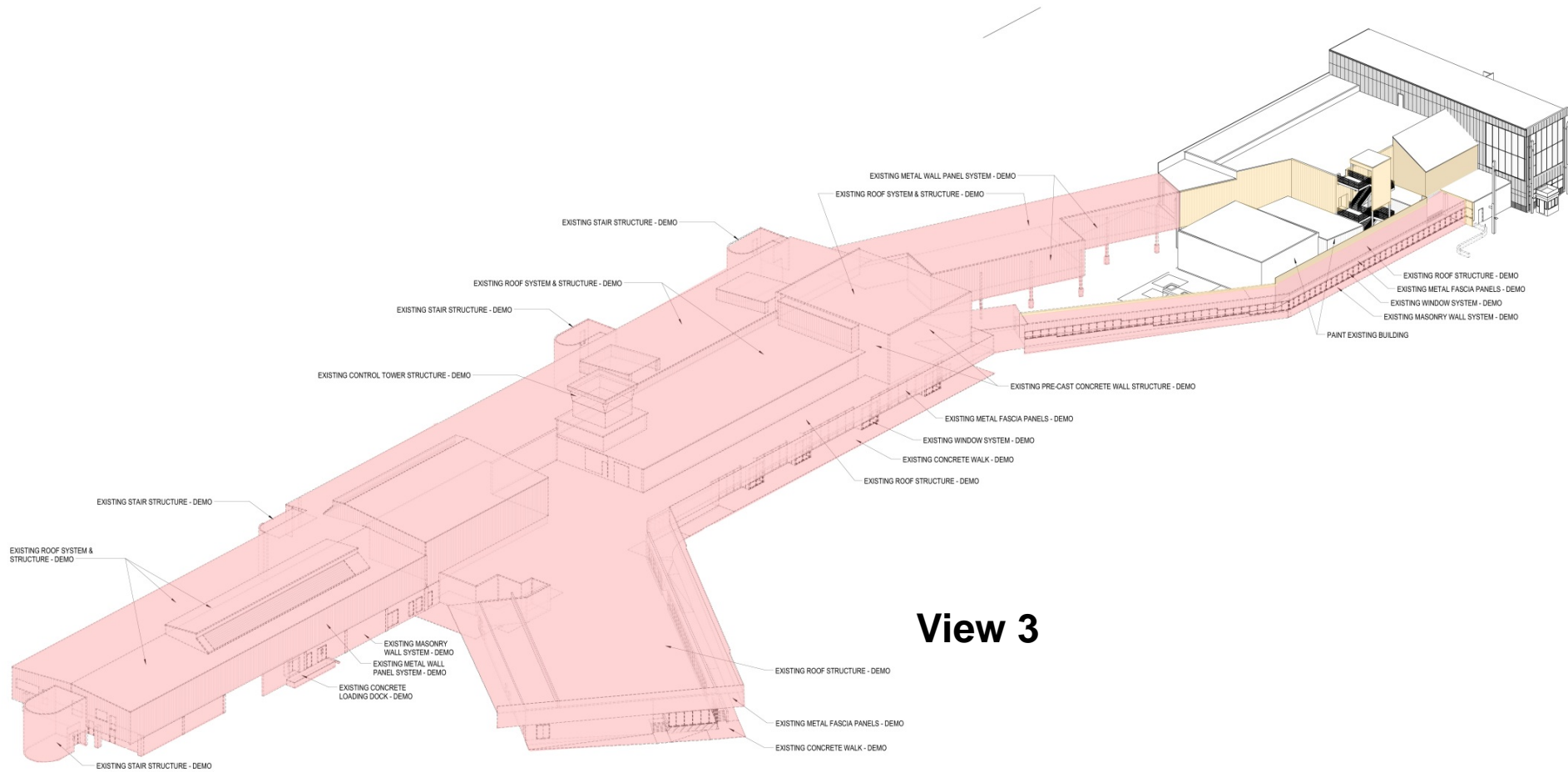


North Concourse

North Concourse



North Concourse Demolition

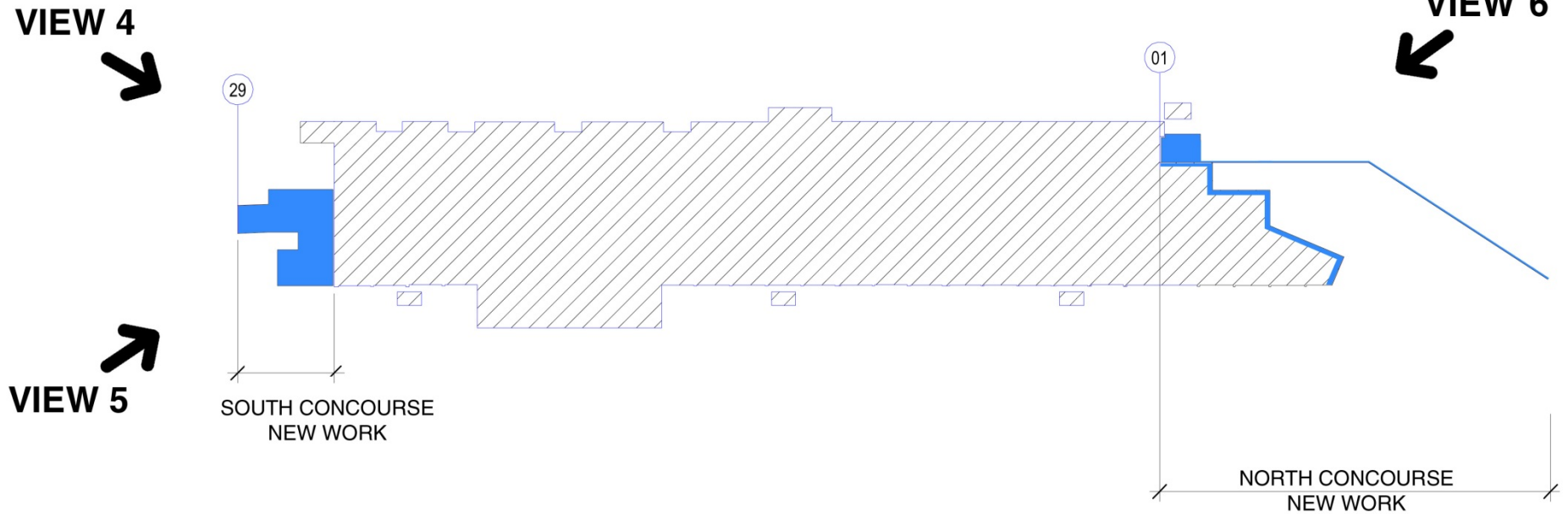


View 3

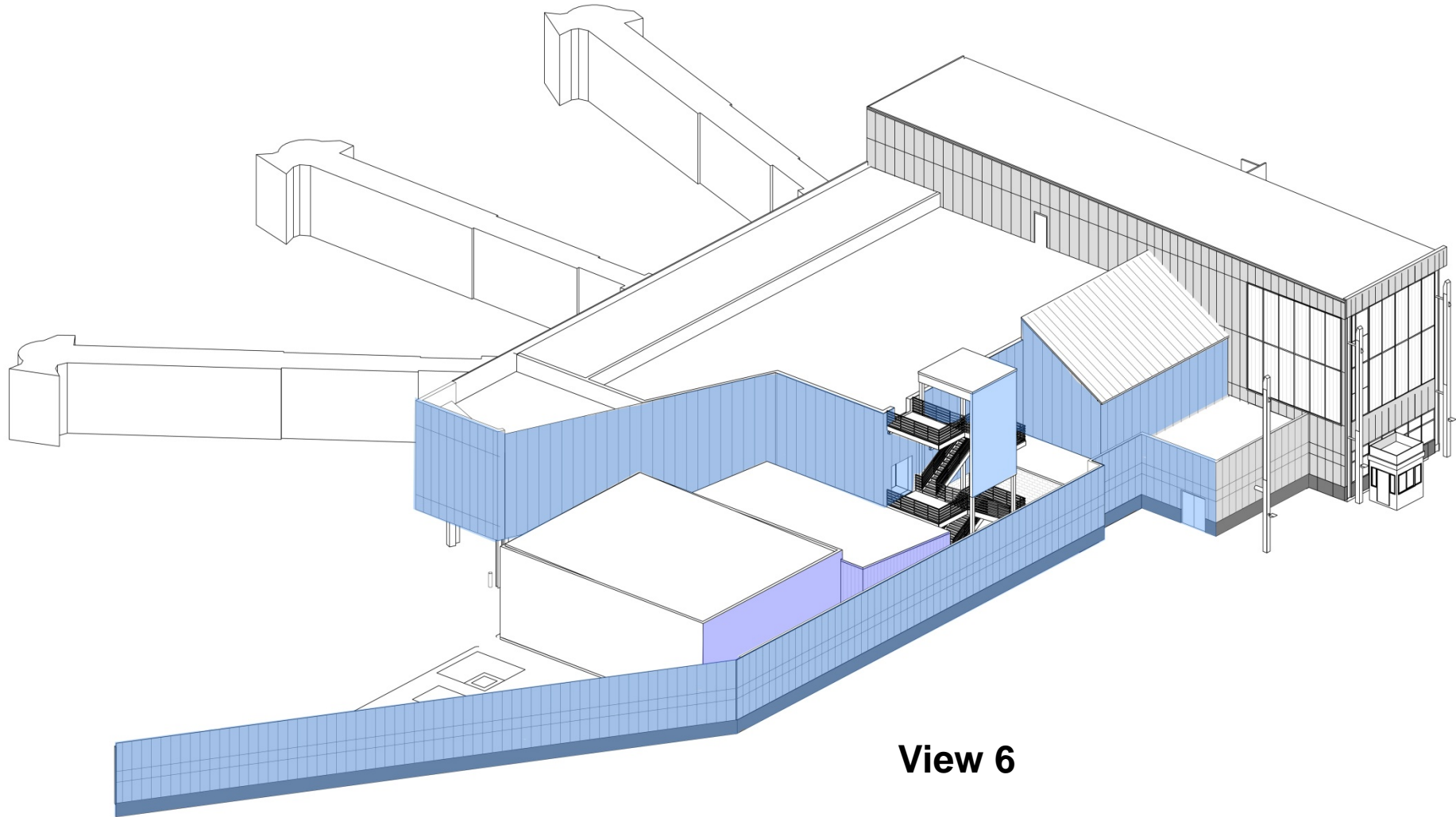
3 NORTH CONCOURSE - LOOKING SOUTHEAST - EXTERIOR DEMO

Terminal 1

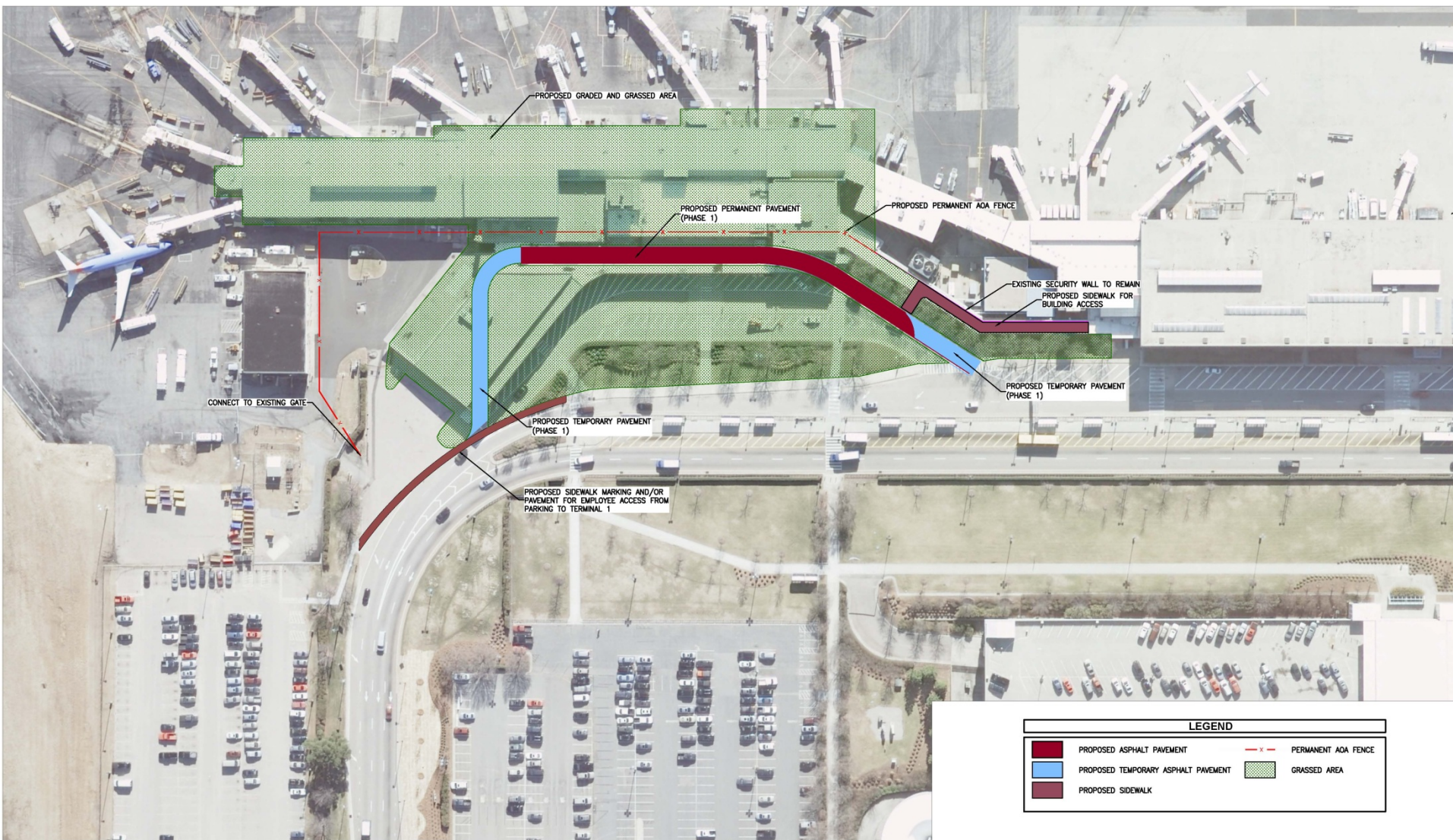
TERMINAL 1



Terminal 1 North Modifications



North Concourse Area Site Work



Terminal 1 at Completion of Demolition Project



view from northeast

Terminal 1 at Completion of Demolition Project



view from southwest

Terminal I Demo

How?

CM @ Risk – Balfour Beatty

Multiple bid packages

When?

Expected to be bid by Spring 2016

Thank You

