



Business Opportunity Workshop

Construction Managers and Contractors (Prime and Sub)

October 7, 2022



Raleigh-Durham
Airport Authority

Agenda

- RDU Team Introductions
- State of RDU
- Project Opportunities
 - Terminal 2 Landside Expansion Program
 - CONRAC
 - AOC & Other Facilities Office Space
 - Economy 3 Expansion
 - Aviation PWY/Natl Guard Drive
- MWSB/DBE Program
- Future RFQ/Selection Process
- Questions



RDU Team Introduction



RDU Team Introductions

- Bill Sandifer, EVP & COO
- Jaymes Carter, VP Buildings & Building Systems
- Ron Jewett, VP Facility Asset Management
- Thiane Carter, Director of Small Business Programs





State of RDU

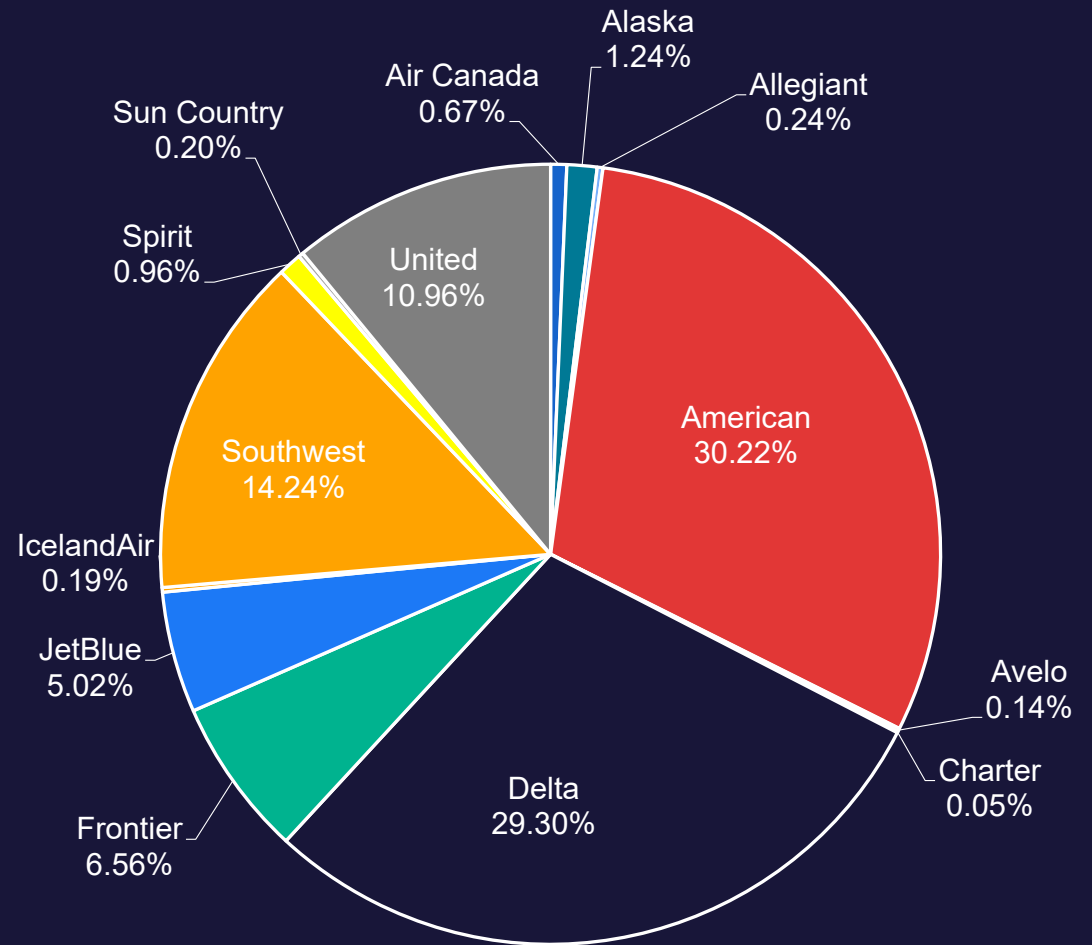
J.D. POWER RANKS
RDU TOP 5
LARGE AIRPORT
IN NORTH AMERICA
FOR 2022



Raleigh-Durham
International Airport



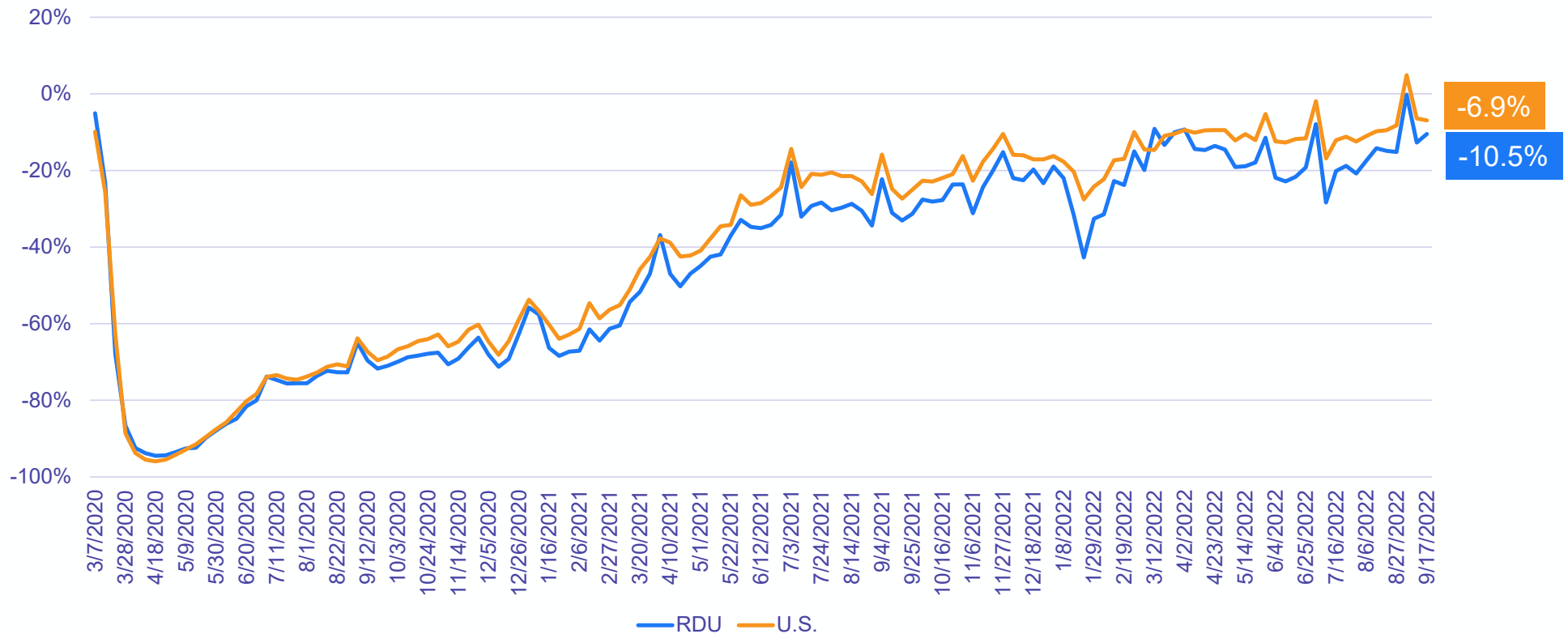
Airline Market Share



Data based on YTD activity from July 2022 activity report.

Traffic Recovery Trends

RDU traffic 90% of 2019; running below National traffic trends



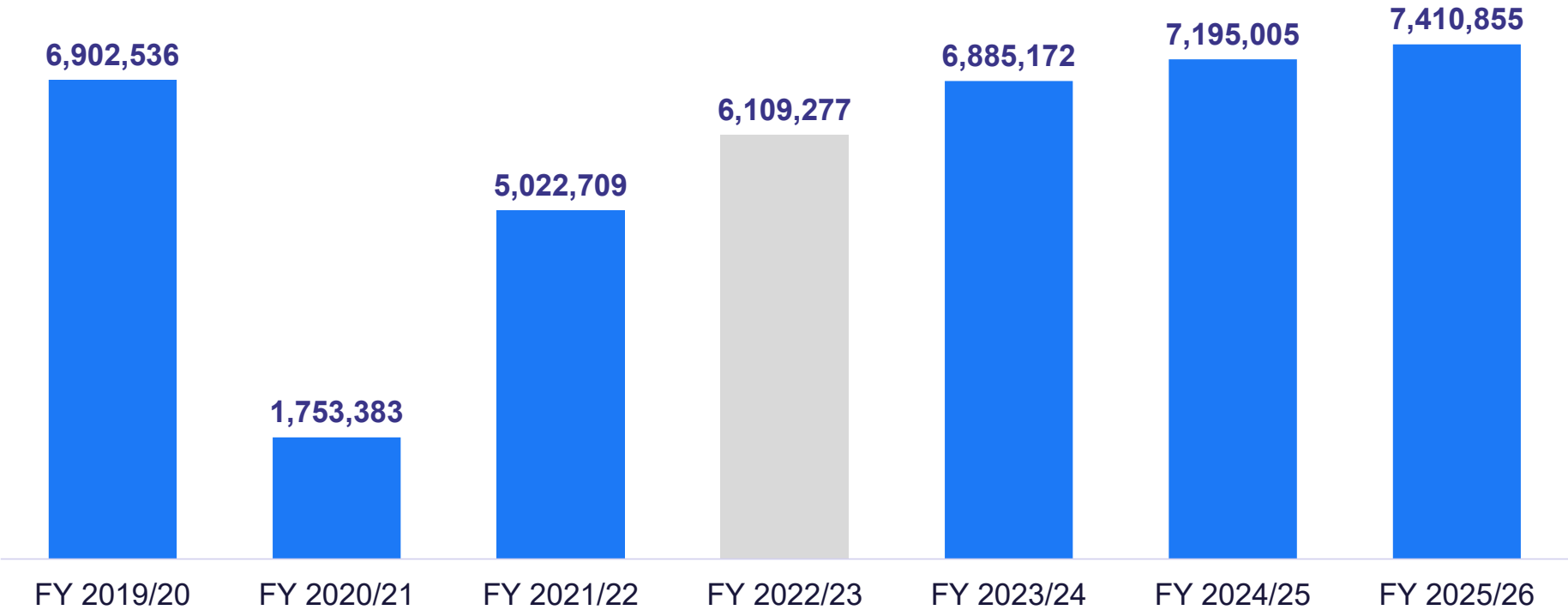
Raleigh-Durham Airport Authority

Note: TSA screen numbers include airport employees, flight crews, etc.
Source: TSA

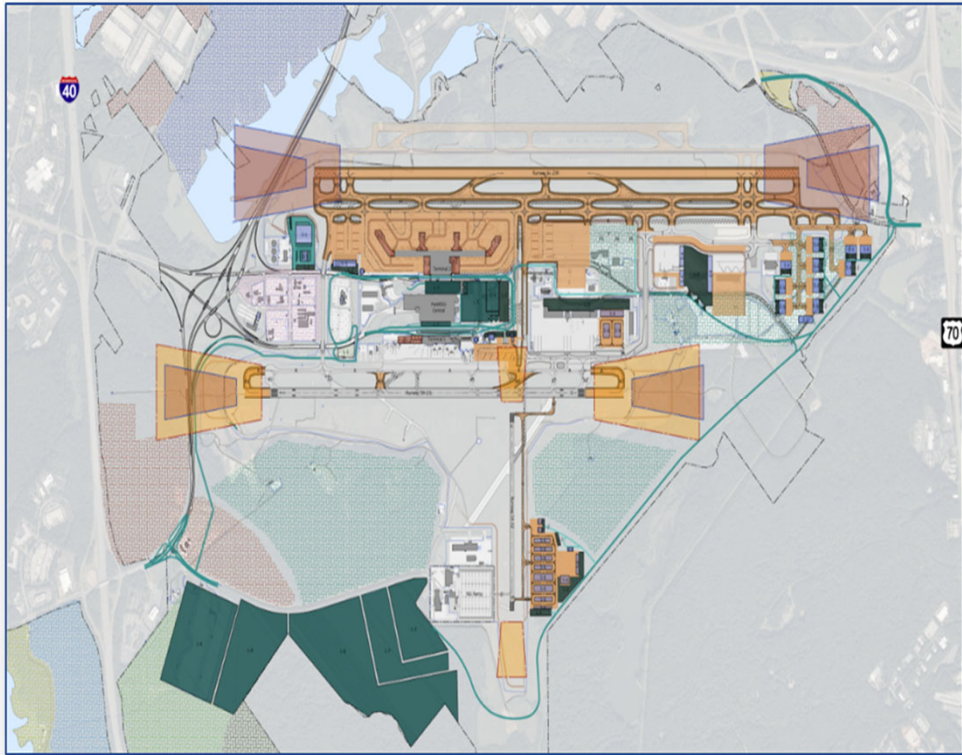
Current FY Passenger Forecast

Stronger than expected April and May boosted the FY22/23 forecast

RDU Five-Year FY EPAX Forecast



Vision 2040: Airport Master Plan



Programs:

- Airfield
- Terminals
- Ground Transportation
- General Aviation

Total = \$4.0+ Billion



\$2.0+B Capital Program in the next 8-10 years

- \$0.7B in airfield projects
 - Runway 5L-23R replacement project
 - Apron and taxiway pavement repairs
 - Other airfield related projects
- \$1.0B in terminal projects
 - Additional airside and landside capacity needed to meet demand
- \$0.5B in landside and other projects
 - CONRAC
 - Economy 3
 - Aviation Parkway/National Guard Drive interchange



Project Opportunities



Terminal 2 Landside Expansion Program



Scope of the Project

- Terminal 2 Landside Building:
 - Multi-level Terminal Expansion
 - Customs & Border Protection
 - Passenger departure and arrival processing
 - Bridge and Tunnel
- Replacement Parking Garages
- John Brantley Blvd Extension



Scope of T2 & Parking Garage Construction

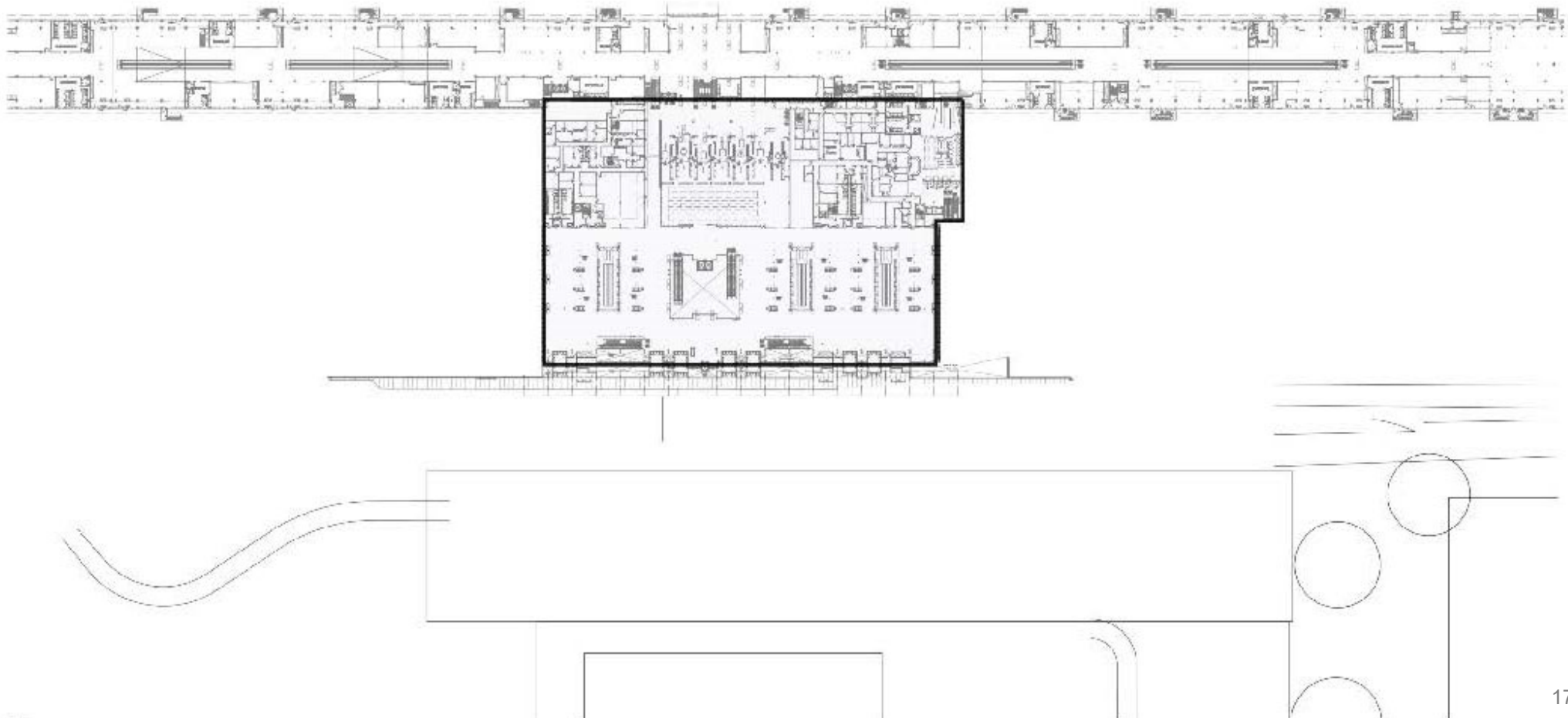
- Demolition & Clearing
- Earthwork
- Drainage
- Stormwater Treatment
- Environmental Protection Meas.
- Bridge Construction
- Utility Protection & Relocation
- Traffic Control
- Paving & Marking



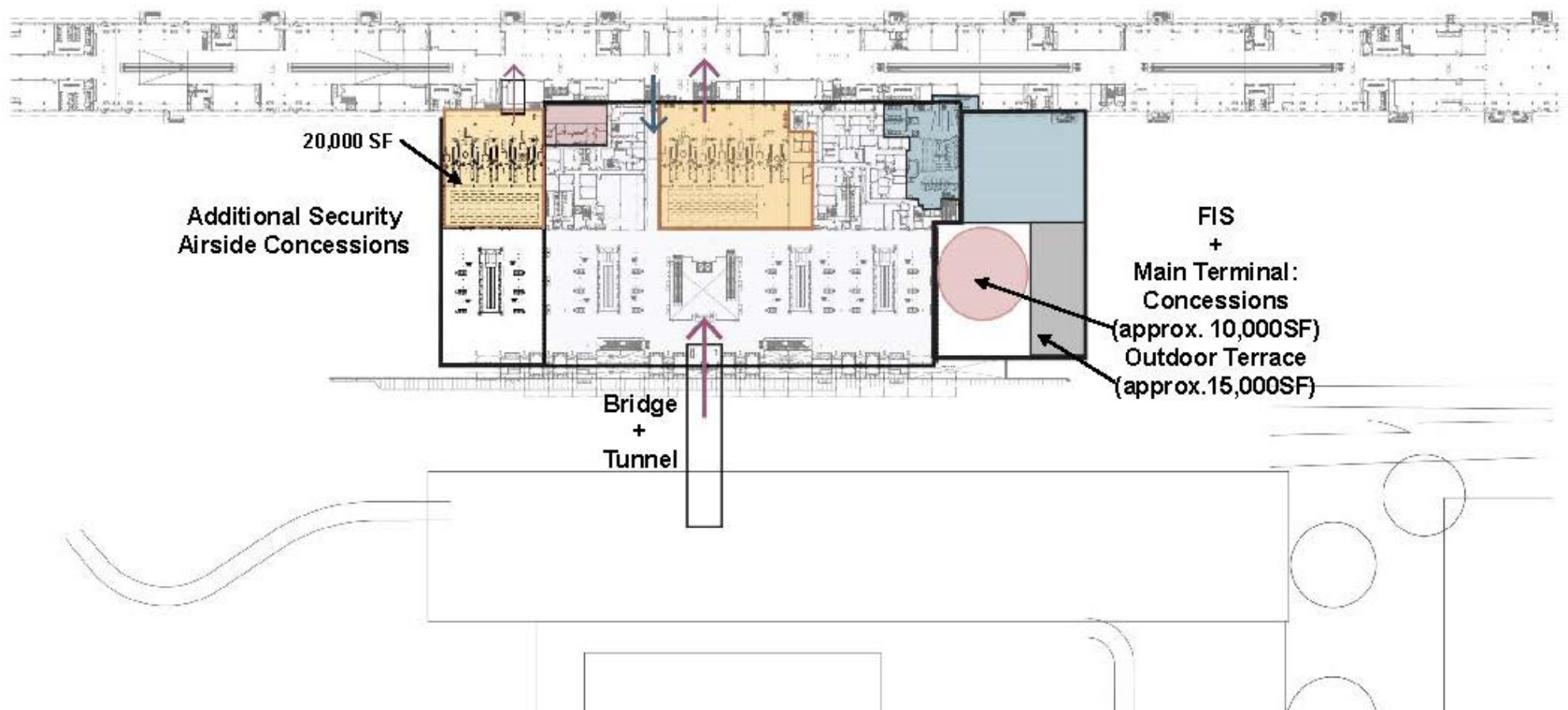
Scope of T2 and Parking Garage Construction (cont.)

- Electrical & Lighting
- Conveying Systems
- Communications Devices & Cables
- Security Measures
- Guidance Signage
- Landscaping
- Thermal & Moisture Protection
- Specialties
- Fire Suppression
- Plumbing
- HVAC
- Concrete, Masonry, Metals

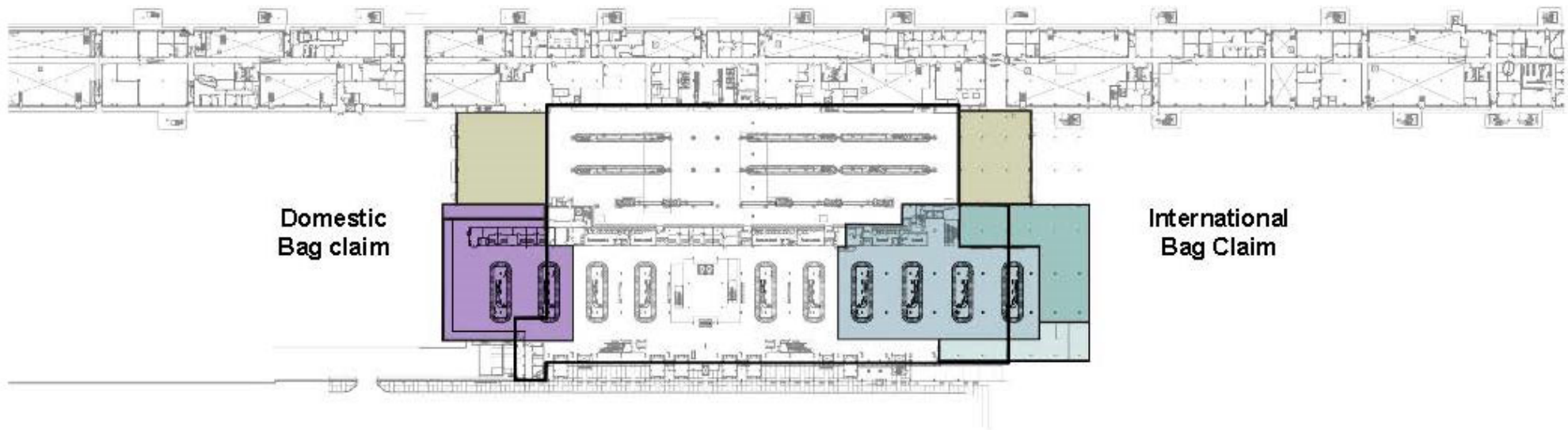
Terminal 2: Landside Expansion



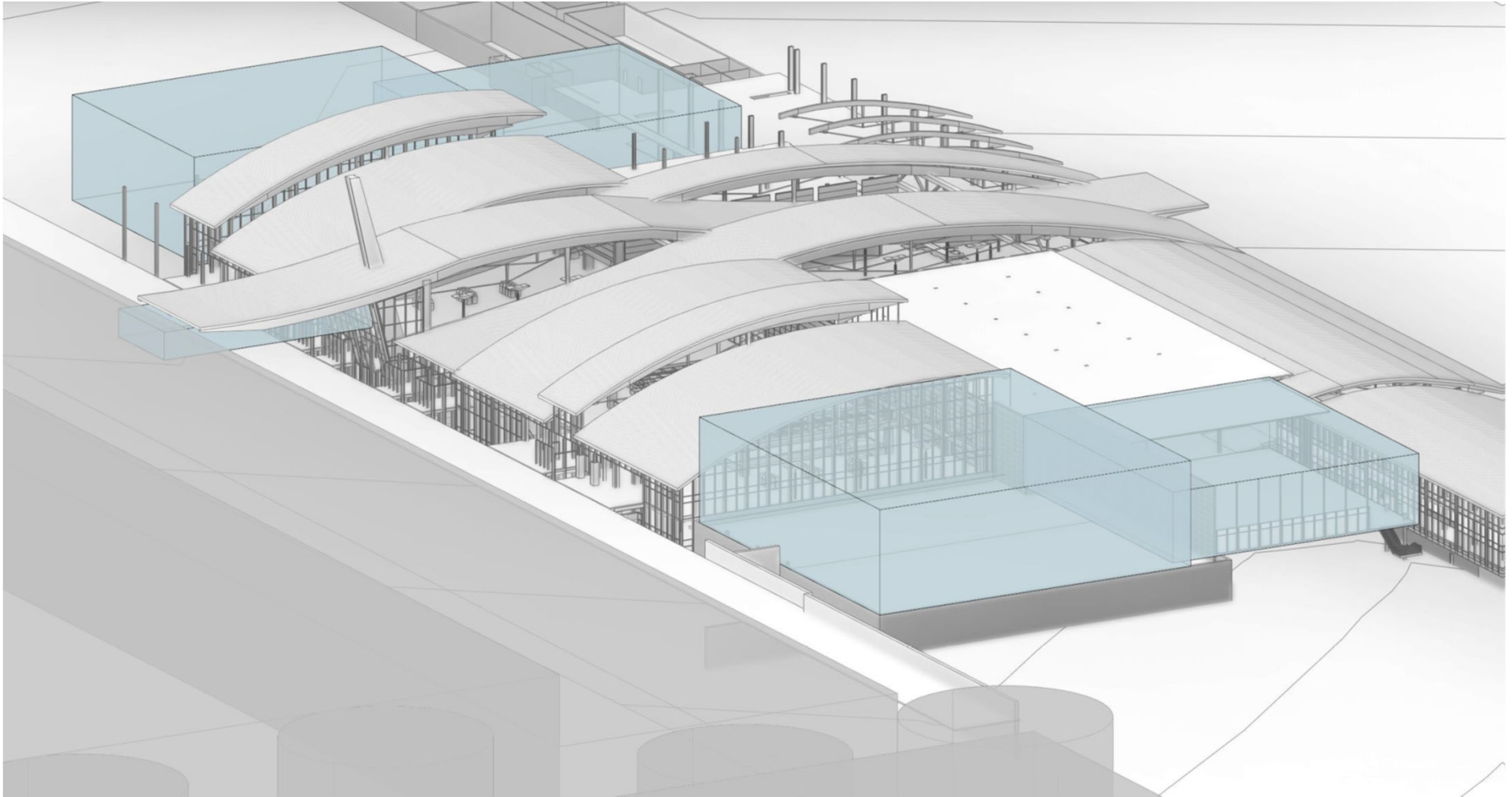
Terminal 2: Landside Expansion



Terminal 2: Landside Expansion

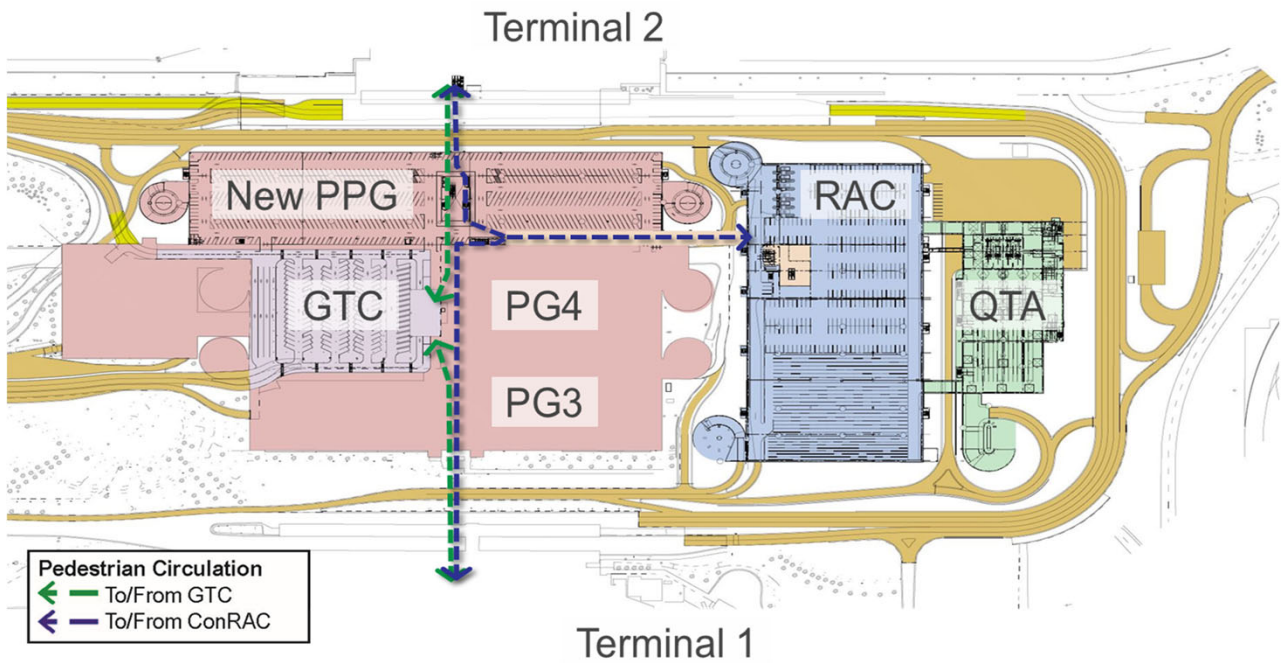


Terminal 2: Landside Expansion

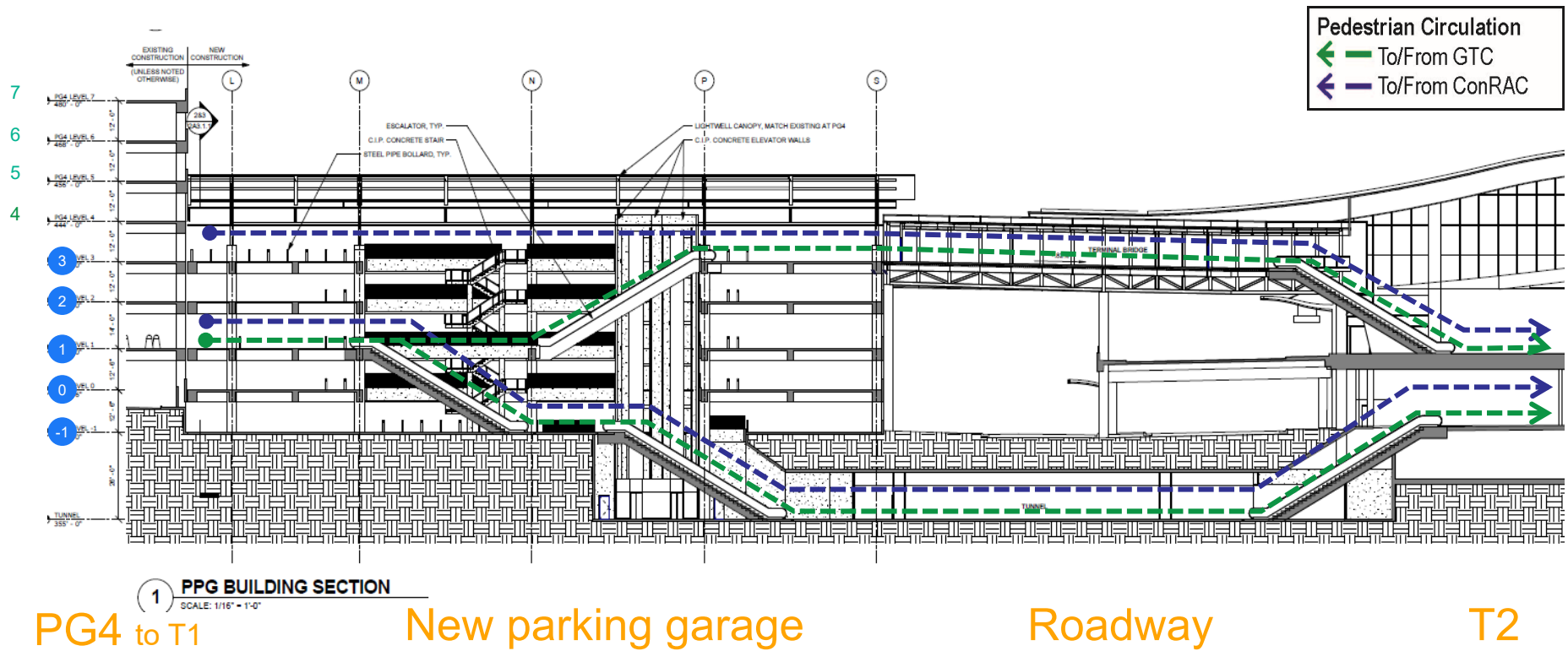




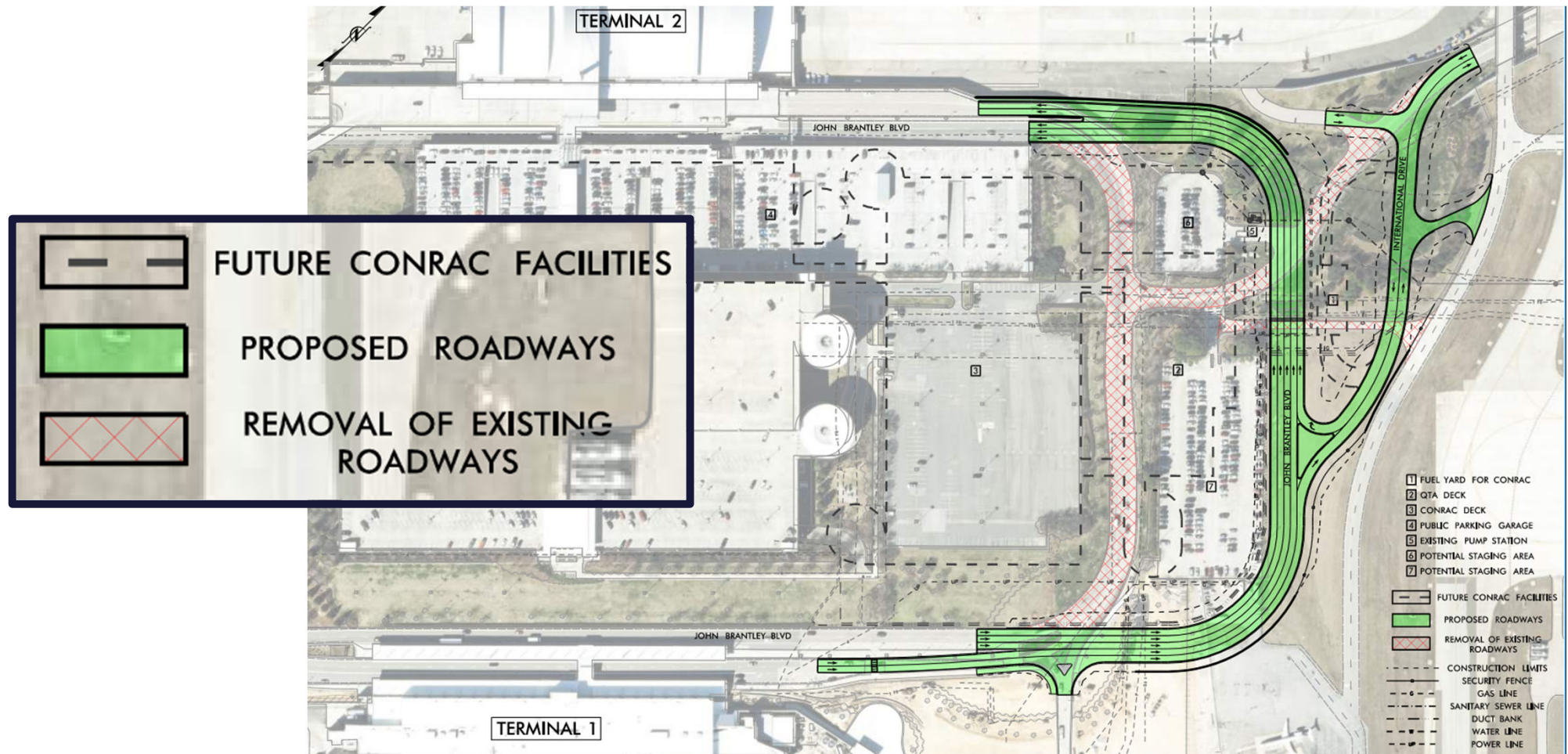
Parking Garage Replacement



Pedestrian Bridge and Tunnel



Conceptual JB Boulevard Extension





JBB Scope of Construction

- Demolition & Clearing
- Earthwork
- Drainage
- Stormwater Treatment
- Environmental Protection Meas.
- Utility Protection & Relocation
- Traffic Control
- Paving & Marking



JBB Scope of Construction (cont.)

- Electrical & Lighting
- Communications Devices & Cables
- Security Measures
- Guidance Signage
- Landscaping



Consolidated Rental Car Facility



Scope of Construction

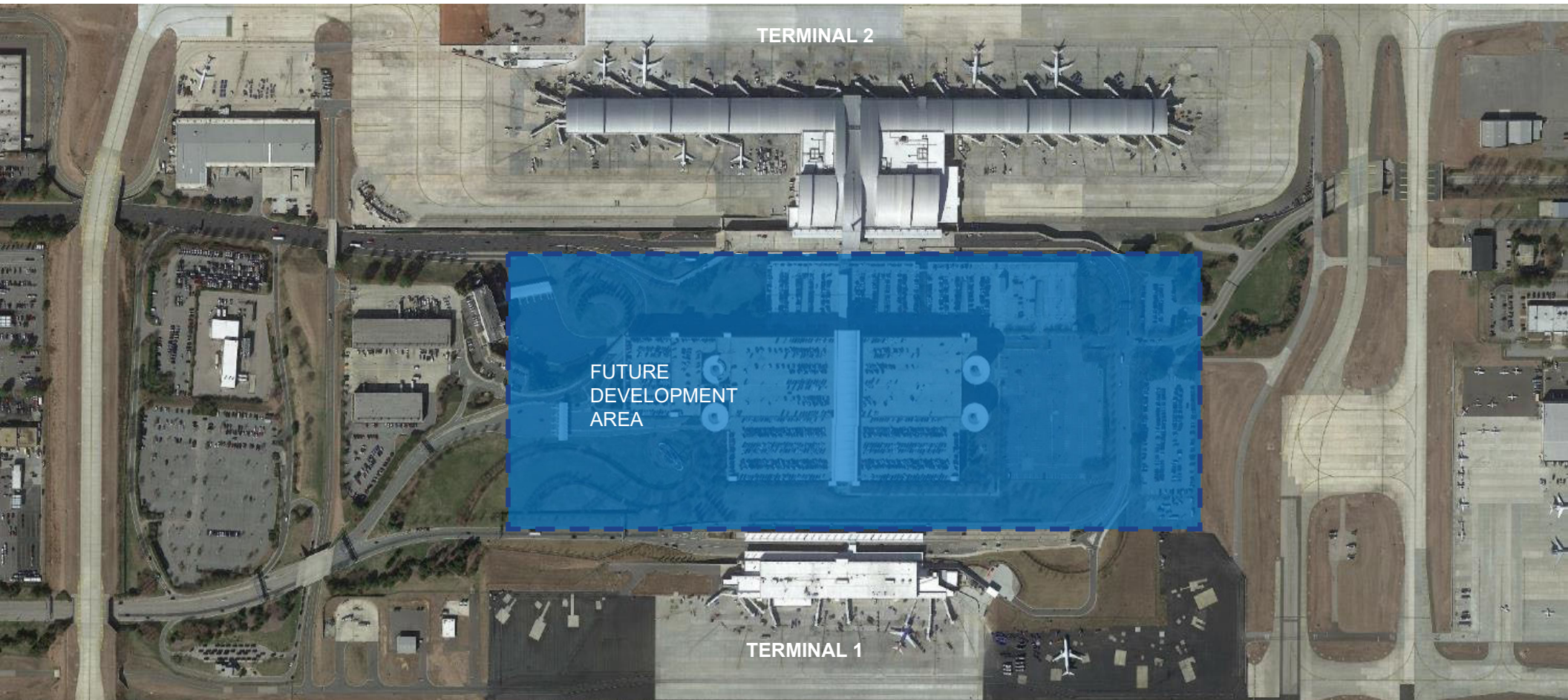
- Demolition & Clearing
- Earthwork
- Drainage
- Stormwater Treatment
- Environmental Protection Meas.
- Bridge Construction
- Utility Protection & Relocation
- Traffic Control
- Paving & Marking



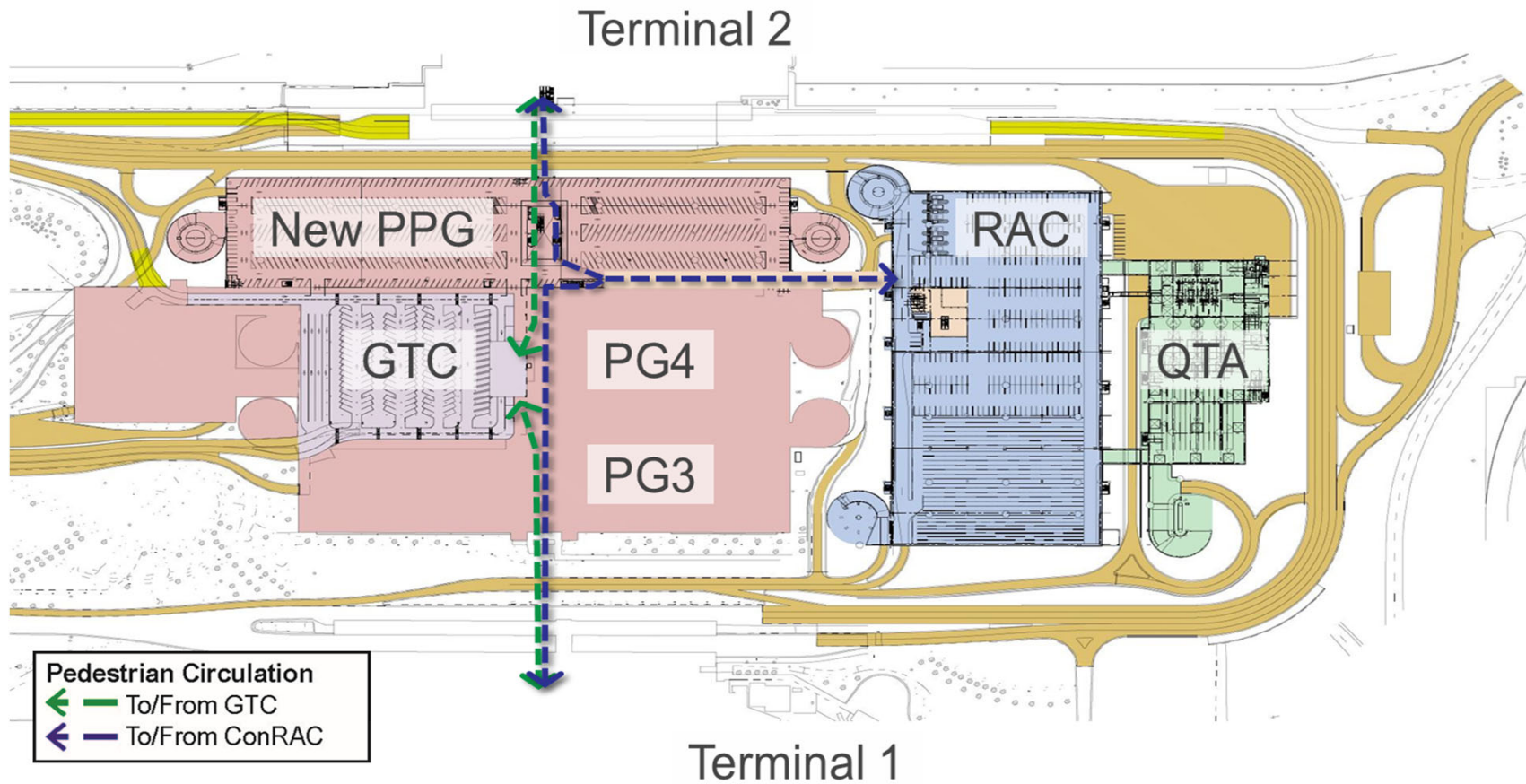
Scope of Construction (cont.)

- Electrical & Lighting
- Conveying Systems
- Communications Devices & Cables
- Security Measures
- Guidance Signage
- Landscaping
- Thermal & Moisture Protection
- Specialties
- Fire Suppression
- Plumbing
- HVAC
- Concrete, Masonry, Metals

Consolidated Rental Car Facility



Consolidated Rental Car Facility



Consolidated Rental Car Facility



A photograph of an airport tarmac with several aircraft. In the background, a United Airlines plane (N871UA) is parked at a gate with its boarding bridge connected. In the foreground, a Delta Connection plane (N1301) is parked. Other aircraft and ground service equipment are visible in the background.

Airport Operations Center & Other Facility Office Space Renovations



Scope of Construction

- Drainage
- Environmental Protection Meas.
- Utility Protection & Relocation
- Wood, Plastics & Composites
- Thermal & Moisture Protection
- Openings
- Finishes
- Specialties
- Equipment
- Furnishings
- Fire Suppression



Scope of Construction

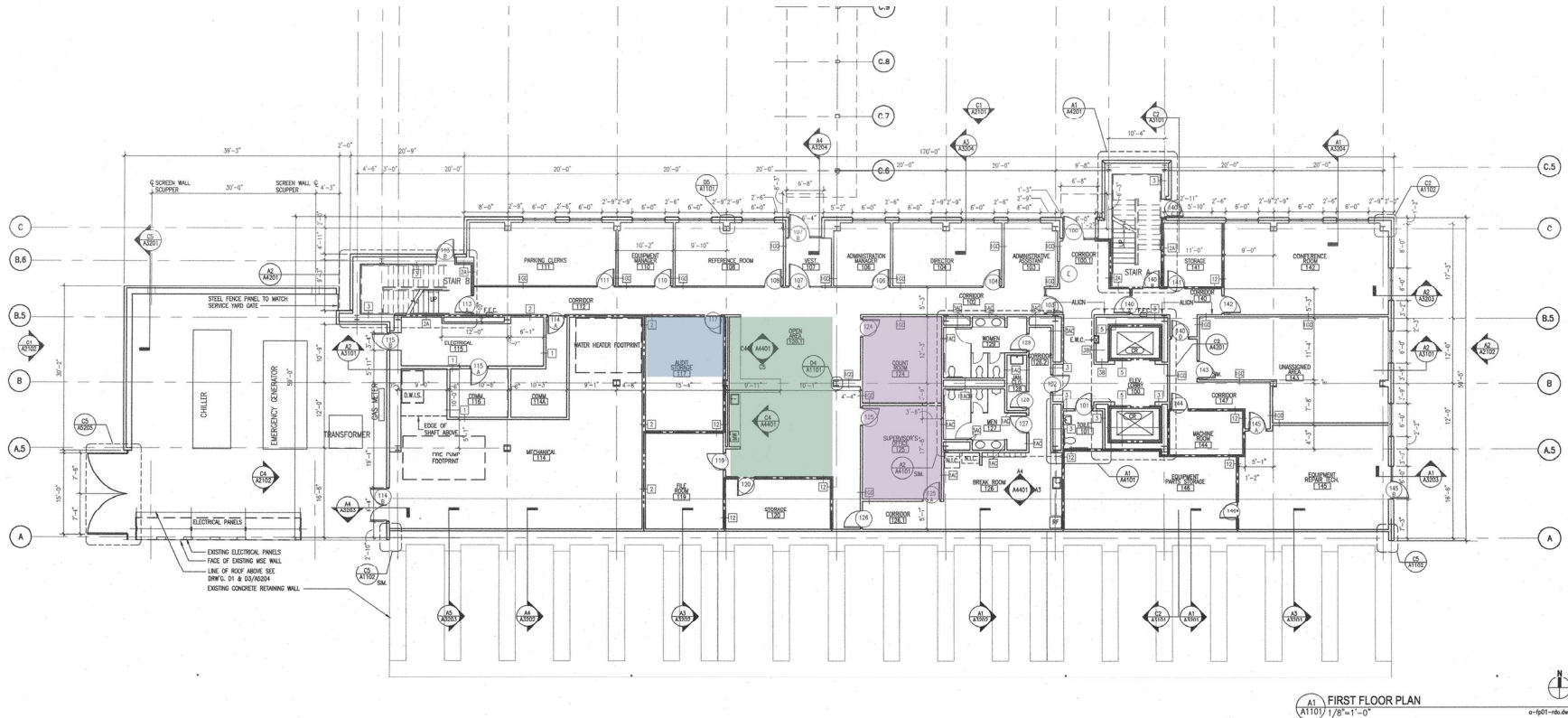
- Plumbing
- Heating, Ventilating & Air Conditioning (HVAC)
- Electrical
- Communications
- Electronic Safety & Security
- Utilities

AOC/EOC Fifth Floor Buildout



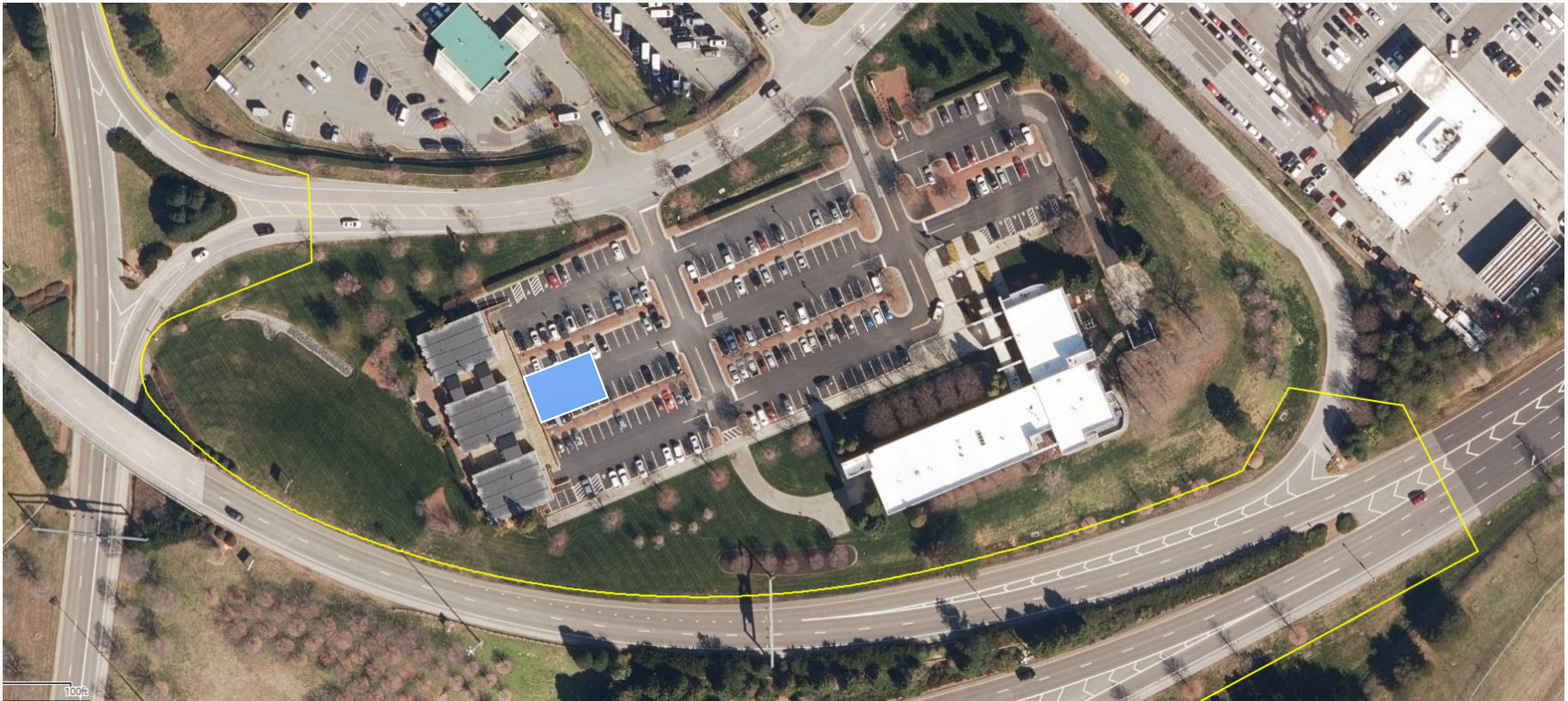


AOC First Floor: Available Space to Convert to Open Office

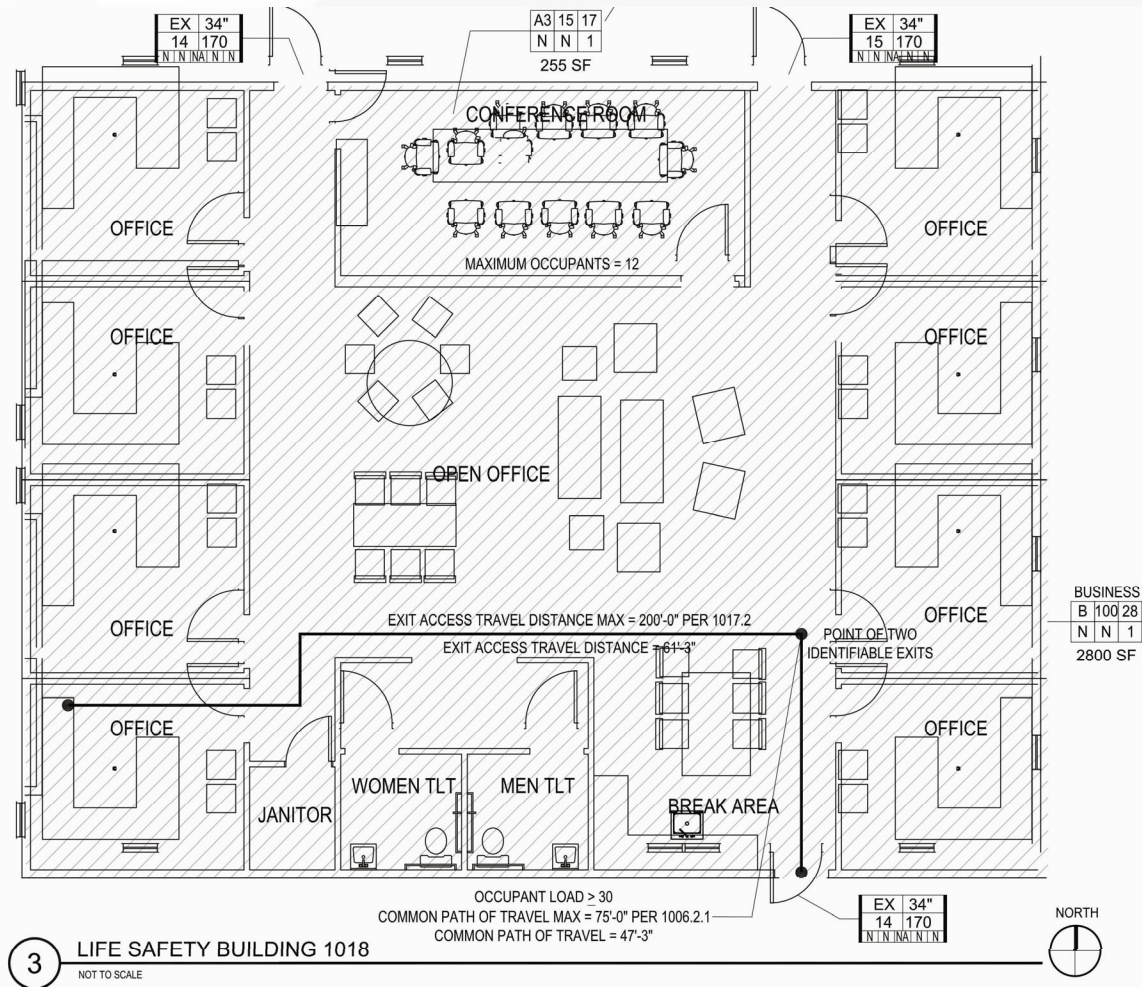


- AVAILABLE OFFICE (1)
- AVAILABLE TO CONVERT (+5 IS WORKSTATIONS)
- AVAILABLE TO CONVERT (+4 WORKSTATIONS)

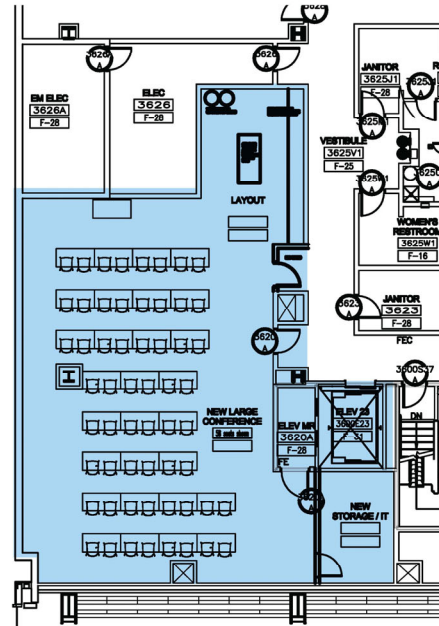
Creating Flexible Office Space: Modular Units



Creating Flexible Office Space: Modular Units



A large, empty industrial or warehouse space with a high ceiling, exposed ductwork, and walls covered in vertical yellow and white stripes. The floor is concrete.



-

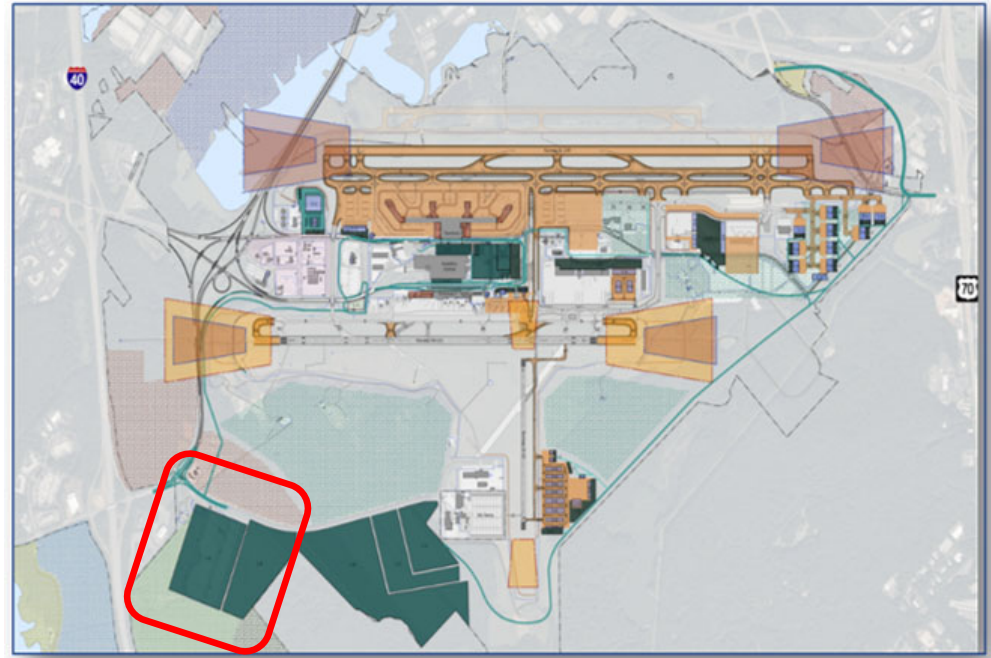
- B 1 LARGE MEETING ROOMS**
1 STORAGE / IT CLOSET
1 LAYOUT AREA - BASE CABINET WITH COUNTER TOP,
SPACE FOR TRASH/VENDING/WATER COOLER, TABLE
NEW EGRESS DOOR
VIDEO SCREEN ON CART AS NEEDED - NO LOCATION
SHOWN
54 SEATS WITH 27 TABLES SHOWN



Economy 3 Expansion

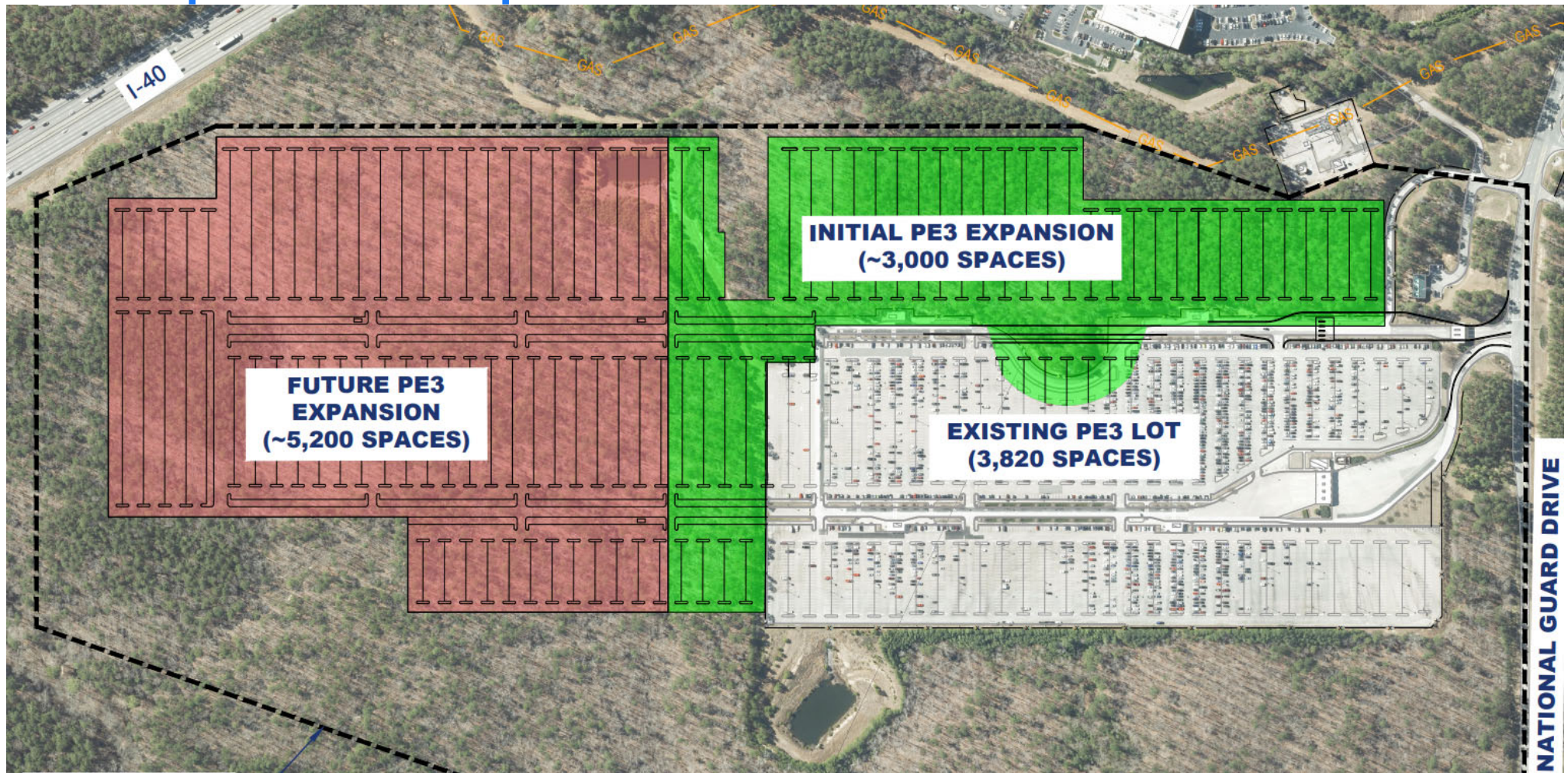
Background

Vision 2040: Airport Master Plan



Conceptual Parking Expansion

Proposed Expansion





Scope of Construction

- Clearing & Grubbing
- Earthwork
- Drainage
- Stormwater Treatment
- Environmental Protection Meas.
- Parking Paving & Marking
- Bus Lane Paving & Marking



Scope of Construction (cont.)

- Electrical & Lighting
- Communications Devices & Cables
- Security Measures
- Guidance Signage
- Regulatory Signage
- Landscaping
- Bus Shelters & Canopies
- Observation Building



Aviation Parkway/National Guard Drive Interchange

Background

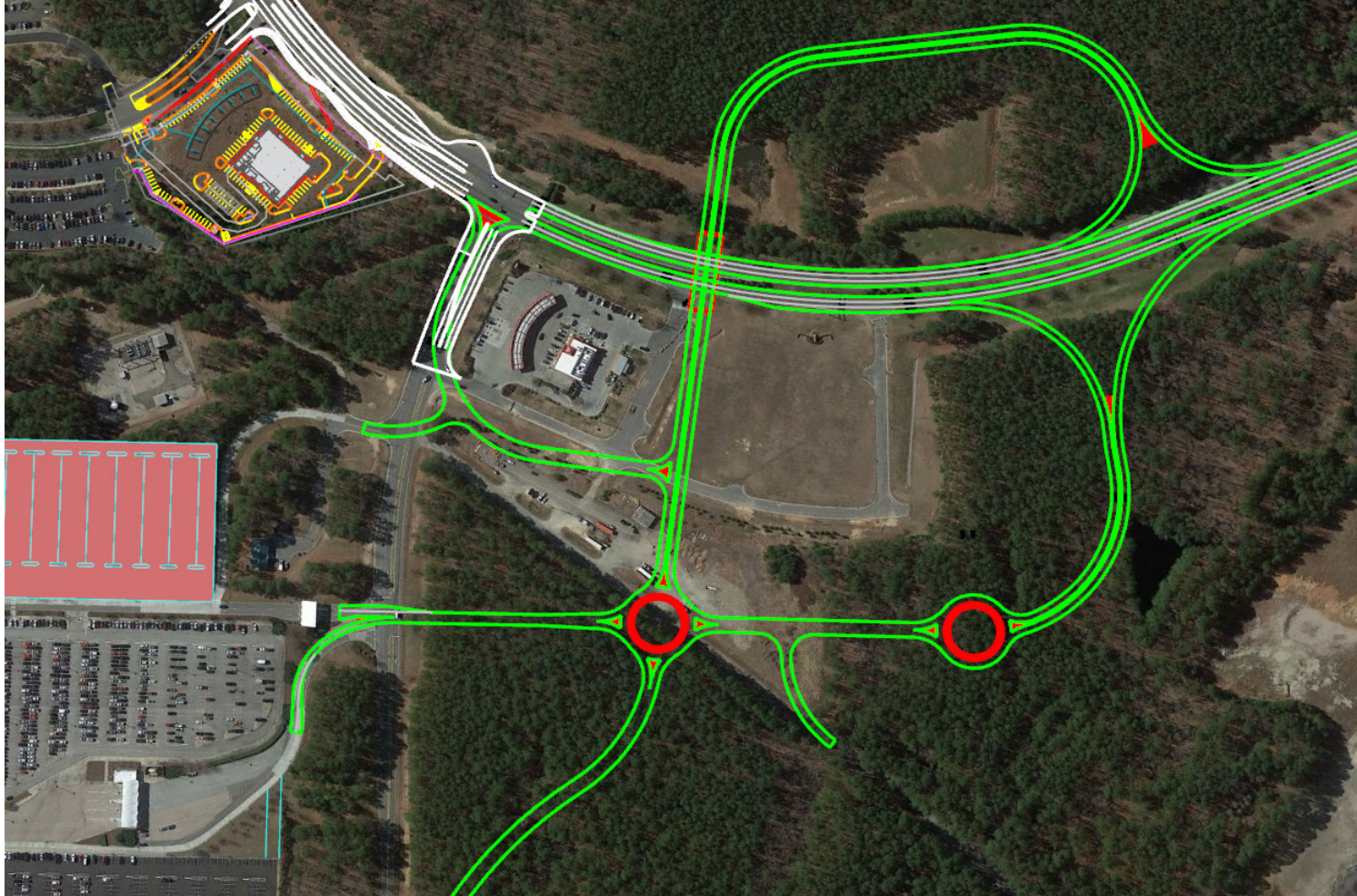
Vision 2040: Airport Master Plan



Conceptual Interchange

Supports Development on National
Guard Drive

Initial Planning





Scope of Construction

- Clearing & Grubbing
- Earthwork
- Drainage
- Stormwater Treatment
- Environmental Protection Meas.
- Bridge Construction
- Paving
- Bus Lane Paving & Marking



Scope of Construction (cont.)

- Electrical & Lighting
- Communications Devices & Cables
- Security Measures
- Guidance Signage
- Regulatory Signage
- Landscaping
- Utility Relocations

A photograph of an airport tarmac at dusk or dawn. In the background, a large United Airlines aircraft (N871UA) is parked with its cargo door open. To its right, another United aircraft (N652RW) is visible. In the foreground, a Delta Connection aircraft (N301PQ) is parked. Ground service vehicles and equipment are scattered around the planes. The text "MWSB/DBE Program" is overlaid in white on the image.

MWSB/DBE Program

Small Business Programs

RDUAA has two programs designed to facilitate the inclusion of minority and women-owned small businesses:

- **Federal Disadvantaged Business Enterprise (DBE)**
 - DBE program applies to federally-assisted contracts
- **RDUAA Minority and Women-owned Small Business (MWSB)**
 - MWSB program applies to contracts RDU or state-funded contracts



Small Business Programs

- MWSEBs & DBEs are **small businesses** which are **owned, operated and controlled** by individuals that are: Black, Hispanic, Asian-Pacific, Native American, Subcontinent Asian American or Women.



Small Business Programs

- RDU sets goals for the participation of MWSB or DBE firms in all contracts.
- Goals are based on the scope of work and the availability of DBE or MWSB firms.
- Goals are calculated as a percentage of the contract, or as a percentage of the Guaranteed Maximum Price (GMP).



How to Achieve MWSB or DBE Goals

MWSB or DBE goals will apply to the Construction Manager at Risk (CMR) contract:

- Overall contract goals
- Pre-Construction Activities
- Construction Activities (separate goals for each bid package)
- Additional amendments or contracts



Achieving MWSB/DBE Goals

CMR should include MWSB/DBEs in each contract to achieve the overall goal and each contract goal or demonstrate efforts to meet the goals.



MWSB Program

- Separate goals for the participation of minority-owned small businesses (MB) and women-owned small businesses (WB)
- The goals are determined based on the type of work being performed and the availability of MB and WB firms
- Typically achieve higher participation with CM at Risk projects than “traditional” bid-build
- Multiple certification types are accepted



Accepted MWSB Certifications

RDUAA accepts various certifications for the MWSB Program:

- NCDOT – Disadvantaged Business Enterprise – DBE
- SBA 8(a) Business Development Certification – SBA 8(a)
- Women's Business Enterprise National Council – Women-Owned Small Business – WOSB



MWSB Certification Requirements

RDUAA must verify business size for these certifications:

- Historically Underutilized Business – HUB
 - Only minority or women-owned HUBs
- Carolinas-Virginia Minority Supplier Development Council – CVMSSDC



DBE Program Goal

- One DBE goal – combines MB and WB participation
- DBE goal per package based on the scope of work and the availability of DBE firms
- RDU is committed to the inclusion of both **minority-owned** businesses and **woman-owned** businesses



DBE Certification

- Firms that wish to be DBE certified must apply through the NC Dept. of Transportation
- DBE certification is a federal certification which can take up to 90 days
- DBE certification is the only certification which will be accepted for federally-funded projects

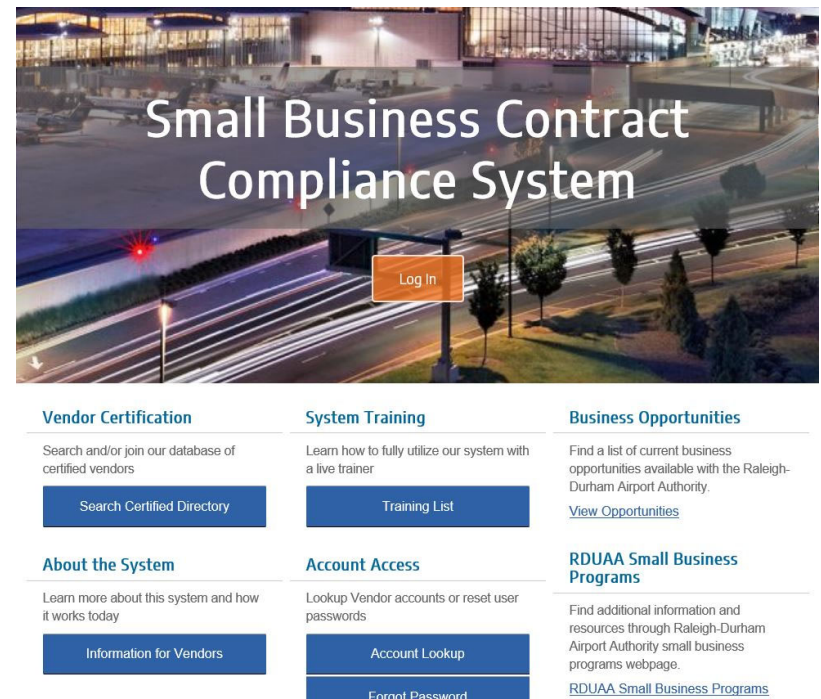
Locating DBE/MWSB Firms

RDUAA certified directory:

www.rdu.com/mwsbdirectory

Search for DBE or MWSB firms

Proposers shall be solely responsible for confirming experience, capacity, and MWSB and DBE eligibility of subconsultants related to this solicitation.



Proposal Requirements

CMR proposers must submit a written statement that describes the Proposer's plan to meet or exceed the MWSB Goals or DBE goal or provide documentation of efforts to meet the MWSB Goals or DBE goal.

- Describes the MWSB/DBE firms that will participate in the CMR
- Describes in specific detail, the scope to be performed by the MWSBs/DBEs
- Estimated MWSB participation (percentage) based on the scope

Proposal Requirements

- Must include Proposer's commitment to use the MWSB firms listed in the proposal as submitted
- Must include written confirmation from each MWSB stating its scope and intent to participate in the agreement.
- Must include Proposer's commitment to meet the requirements of the Authority's MWSB Program
- May also include the methods by which a Proposer will monitor its participation throughout the contract

Proposal Requirements

- For the [MWSB Program](#), proposers must meet [both the MB and WB goals](#) or provide documentation of the efforts to achieve the goals.
- For the [DBE Program](#), proposers must meet [DBE goal](#) or provide documentation of the efforts to achieve the goals.
- RDUAA will determine whether the Proposer has provided sufficient documentation
 - If the CMR does not meet the DBE/MWSB goals, good faith effort documentation must be submitted with the proposal



Good Faith Efforts

- Efforts that are merely pro-forma do not meet the MWSB Program requirements.
- RDUAA considers the quality, quantity and intensity of efforts
- RDUAA reserves the right to reject the proposal of any proposer who fails to make a good faith effort and submit timely, satisfactory evidence of its good faith effort.



Program Requirements

- The successful Proposer's MWSB or DBE commitment will be incorporated into the contract and will be enforceable under the terms of the contract.

A photograph of an airport tarmac at dusk or dawn. In the background, a large United Airlines aircraft (N871UA) is parked with its cargo door open. To its right, another United aircraft (N652RW) is visible. In the foreground, a Delta Connection aircraft (N301PQ) is parked. The scene is dimly lit, with ground service vehicles and equipment visible around the planes. The text "Future RFQ/Selection Process" is overlaid in white on a semi-transparent dark blue background.

Future RFQ/Selection Process



Future RFQ/Selection Process

- RFQ will be issued on October 17
- Pre-Proposal Meeting on November 1
- Proposals due on December 2
- Selection interviews by mid-January



Questions?

Networking Session

