

Balfour Beatty / RDU Contractor Training NC DOT DBE Certification Training

March 21, 2023



Raleigh-Durham
Airport Authority

Balfour Beatty

Agenda

- Welcome
- Team Overview
- Program Overview & Opportunities
 - Runway 5L-23R Replacement
 - Terminal 2 Landside Expansion
 - Economy 3 Expansion
 - Aviation PWY/Natl Guard Drive
- MWSB/DBE Program
- NCDOT DBE Presentation
- Q&A



Team Introduction

Runway 5L-23R Replacement







Scope of Construction

- Clearing & Grubbing
- Earthwork
- Drainage
- Stormwater Treatment
- Environmental Protection Meas.
- Concrete Paving
- Asphalt Paving
- Airfield Lighting



Scope of Construction (cont.)

- Electrical Vault Construction
- Communications Devices & Cables
- Security Fencing
- FAA Nav Aids
- Building Demolition
- Hazardous Material Abatement
- Landscaping
- Utility Relocations

Schedule

- Project is currently under review with the FAA.
- Pending approval from the FAA project packages may bid as early as Q3/Q4 2023.
- Project will be issued in packages
 - Early Grading & Drainage
 - Building Demolition
 - Full Grading & Site Development
 - Lumley Road Relocation
 - Runway 5L-23R Construction
 - Taxiway Conversion



Terminal 2 Landside Expansion



Scope of the Project

- Terminal 2 Landside Building:
 - Multi-level Terminal Expansion
 - Customs & Border Protection
 - Passenger departure and arrival processing
 - Bridge and Tunnel
- Replacement Parking Garages
- John Brantley Blvd Extension



Scope of T2 & Parking Garage Construction

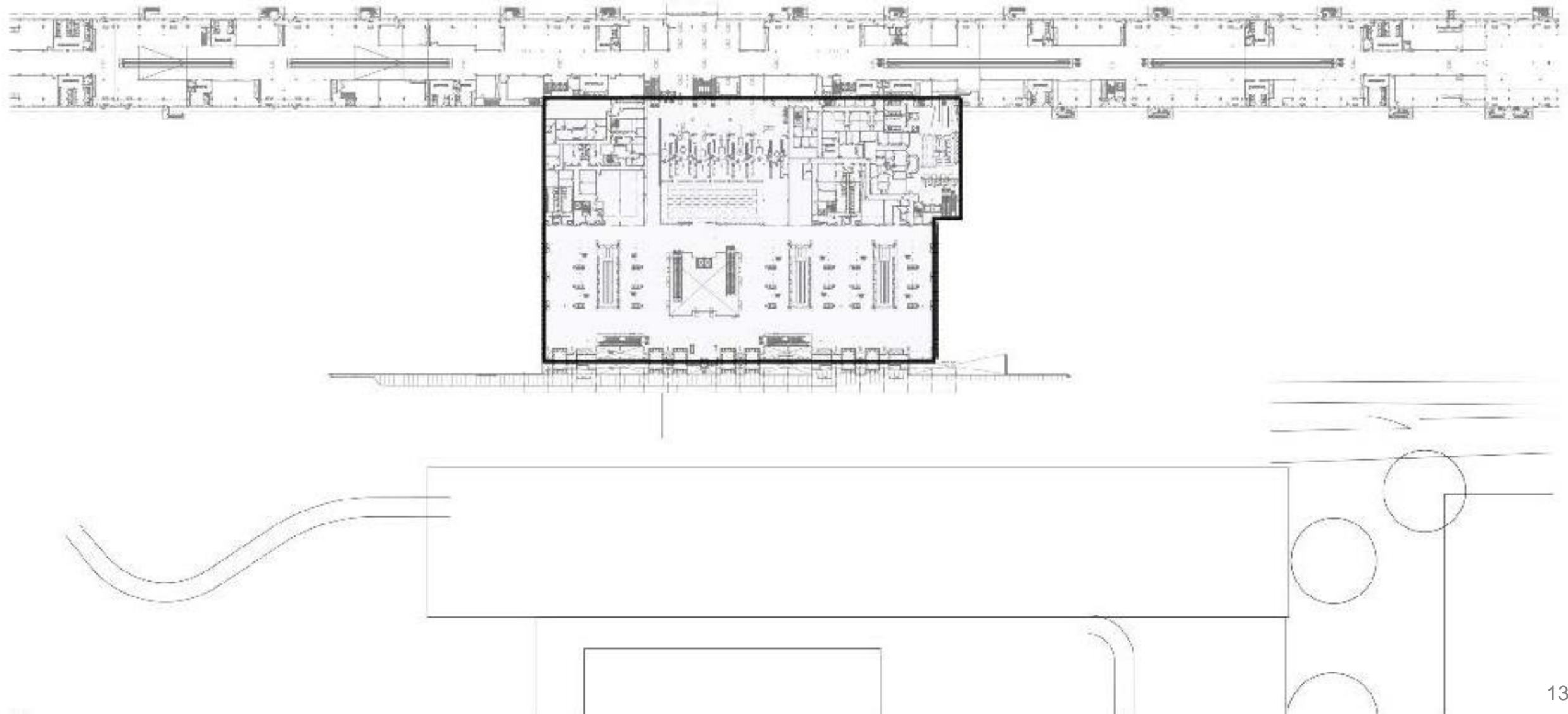
- Demolition & Clearing
- Earthwork
- Drainage
- Stormwater Treatment
- Environmental Protection Meas.
- Bridge Construction
- Utility Protection & Relocation
- Traffic Control
- Paving & Marking



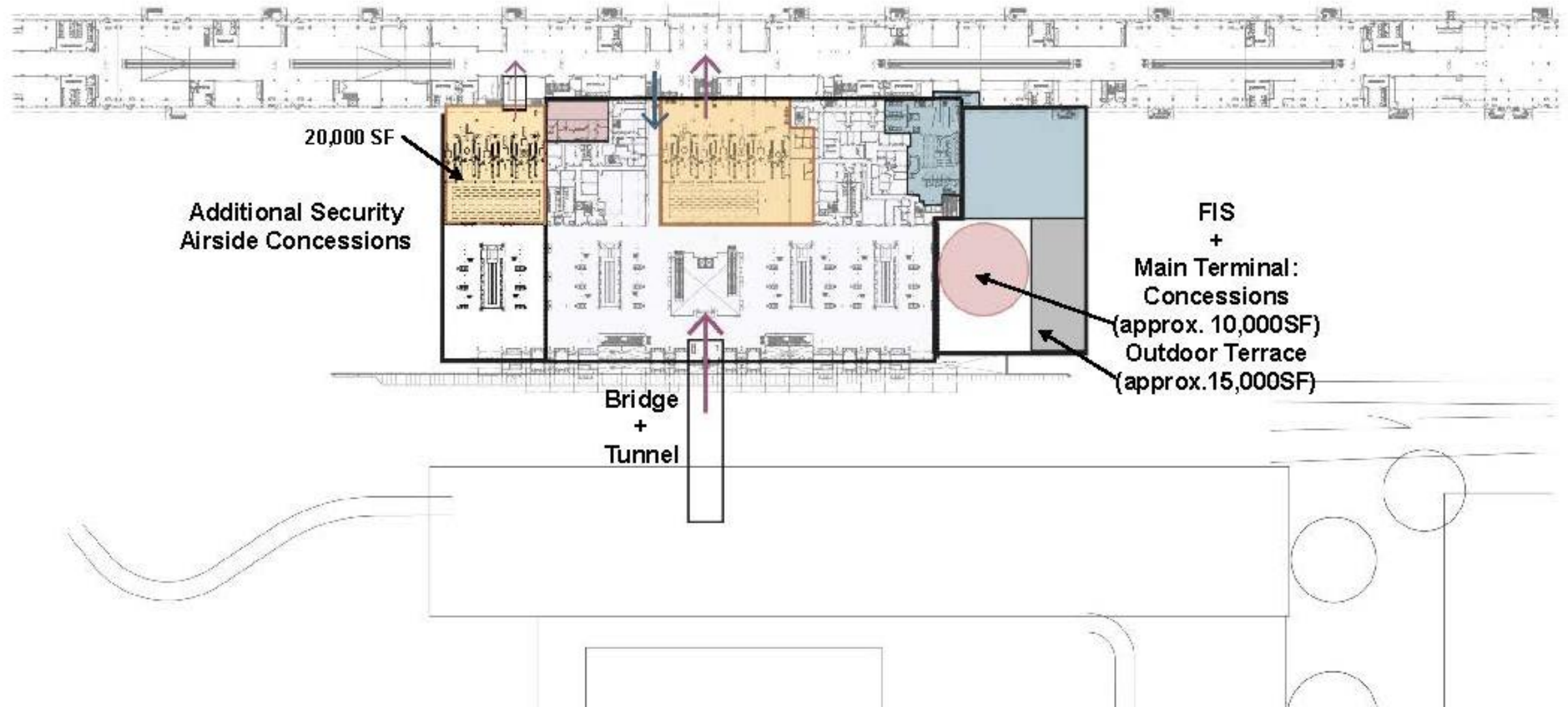
Scope of Construction (cont.)

- Electrical & Lighting
- Conveying Systems
- Communications Devices & Cables
- Security Measures
- Guidance Signage
- Landscaping
- Thermal & Moisture Protection
- Specialties
- Fire Suppression
- Plumbing
- HVAC
- Concrete, Masonry, Metals

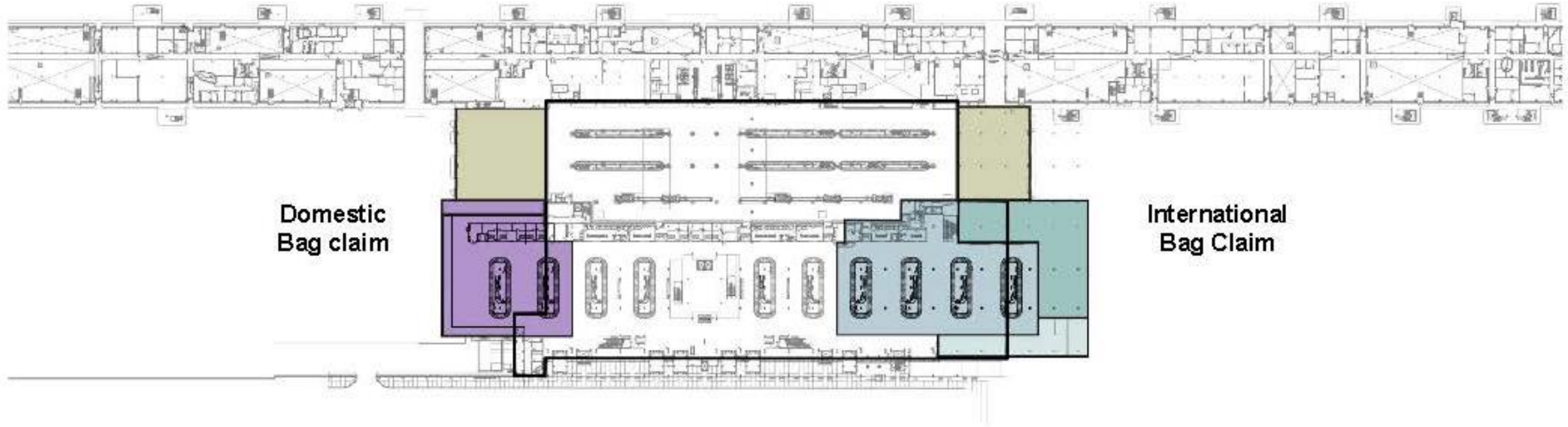
Terminal 2: Landside Expansion



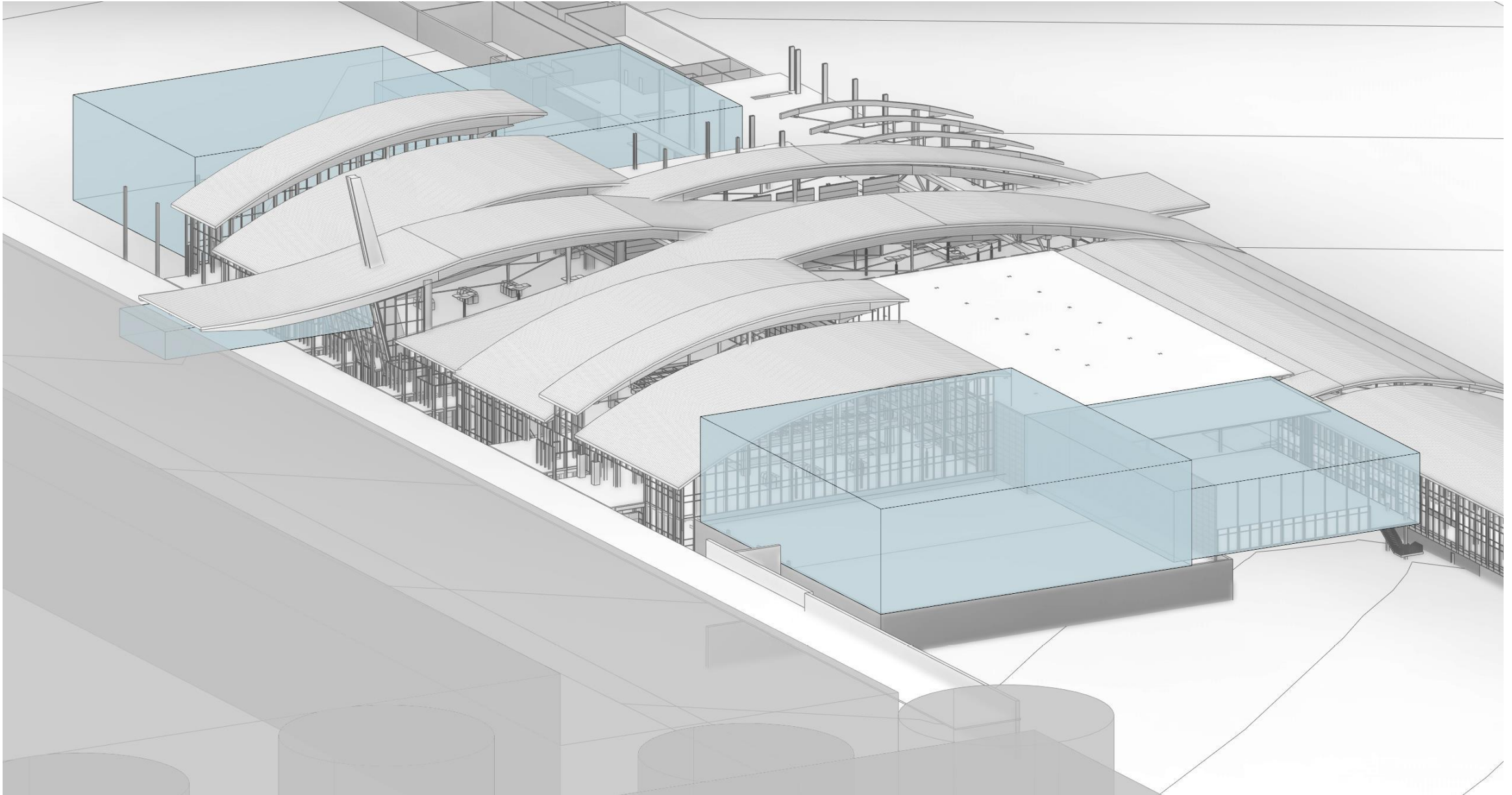
Terminal 2: Landside Expansion



Terminal 2: Landside Expansion

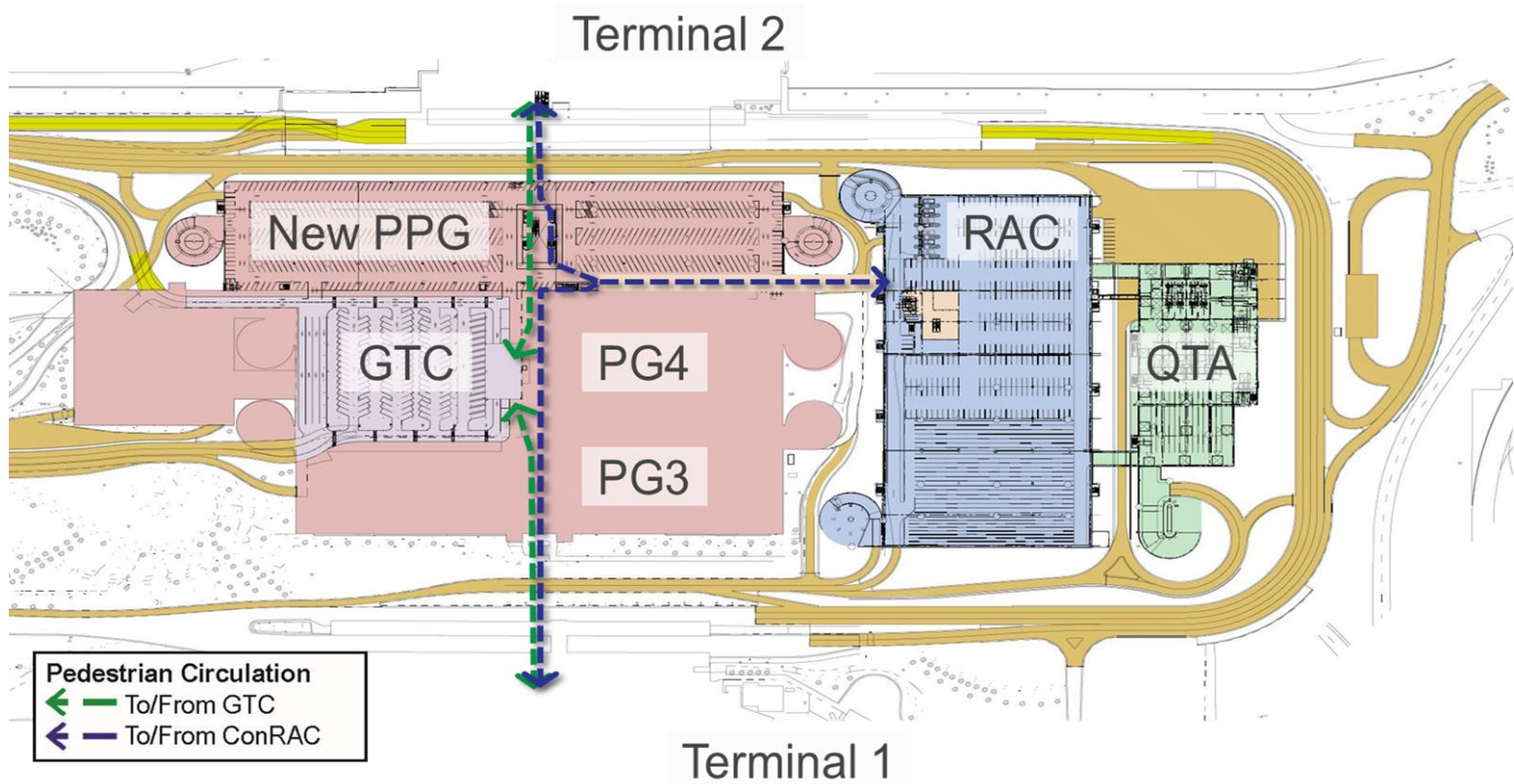


Terminal 2: Landside Expansion

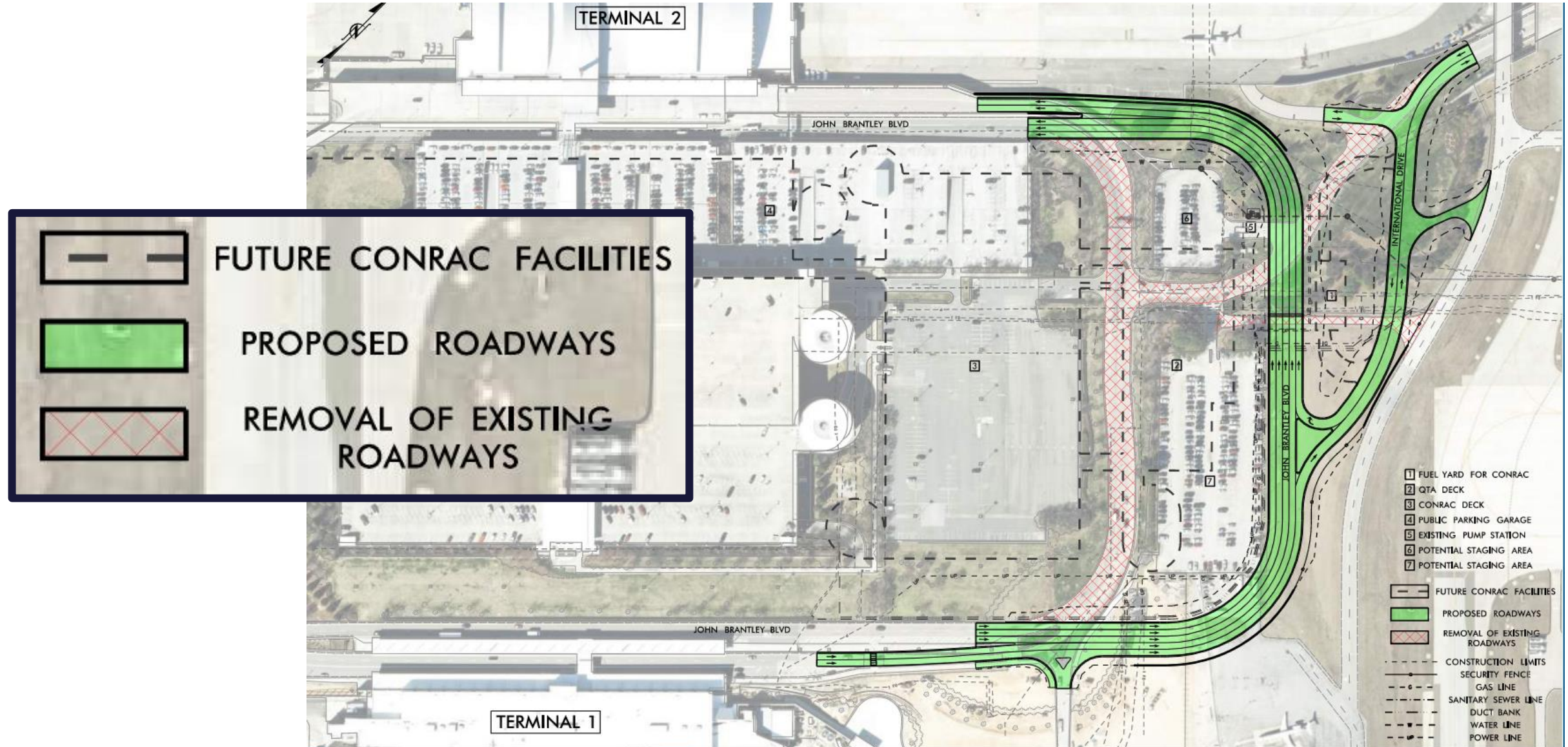




Parking Garage Replacement



Conceptual JB Boulevard Extension





Scope of Construction

- Demolition & Clearing
- Earthwork
- Drainage
- Stormwater Treatment
- Environmental Protection Meas.
- Utility Protection & Relocation
- Traffic Control
- Paving & Marking



Scope of Construction (cont.)

- Electrical & Lighting
- Communications Devices & Cables
- Security Measures
- Guidance Signage
- Landscaping

Schedule

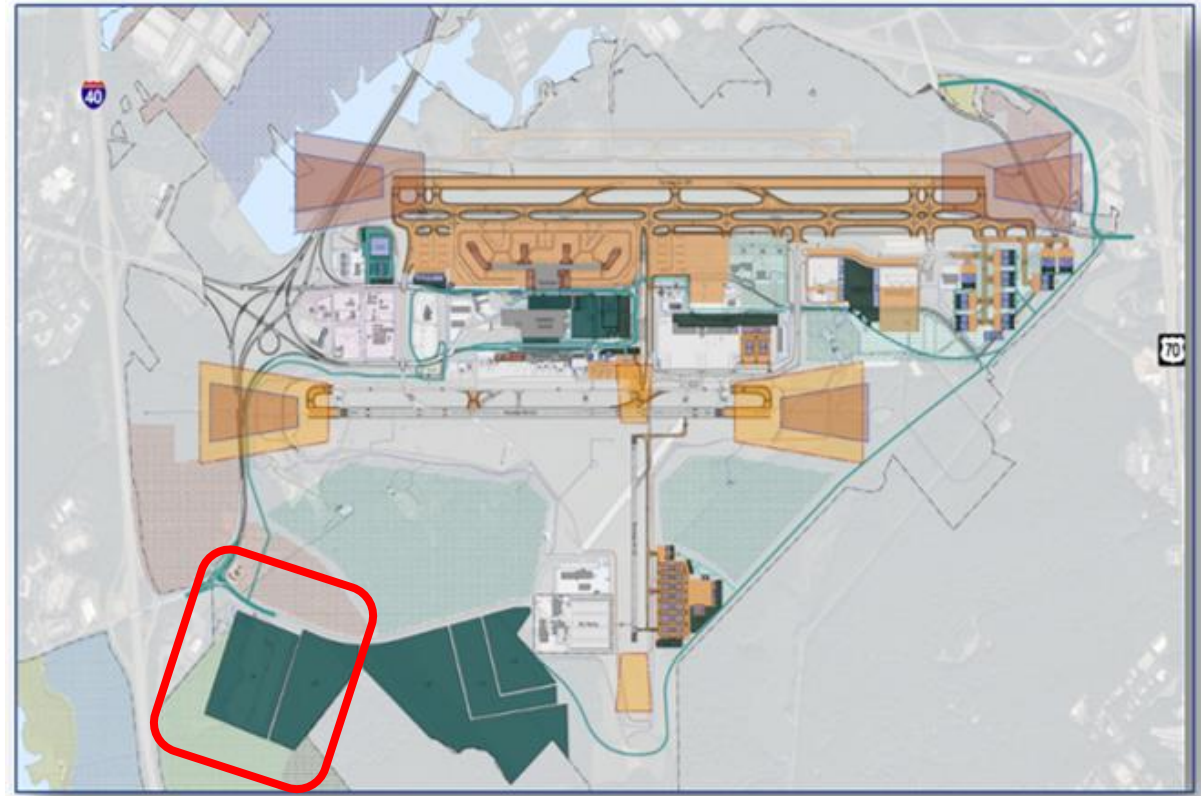
- Program is anticipated to start 1st Quarter 2025.
- Separate packages will be issued for each project.
- Each project is anticipated to be phased and have multiple bids.
- Completion of the program is anticipated by the end of 2029.



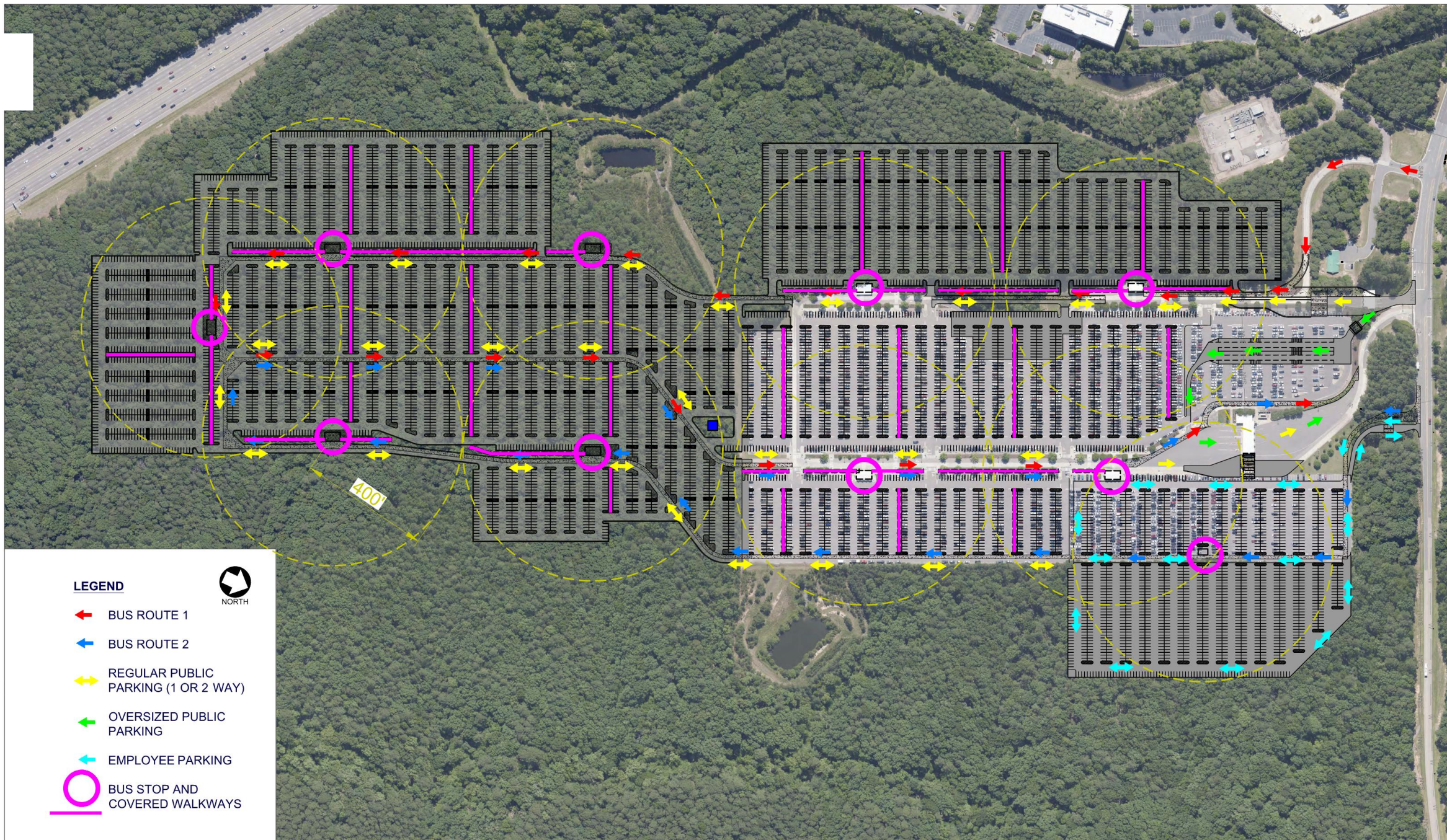
Park Economy 3 Expansion

Background

Vision 2040: Airport Master Plan



Conceptual Parking Expansion



LEGEND

← BUS ROUTE 1

← BUS ROUTE 2

↔ REGULAR PUBLIC
PARKING (1 OR 2 WAY)

→ OVERSIZED PUBLIC
PARKING

→ EMPLOYEE PARKING

○ BUS STOP AND
COVERED WALKWAYS





Scope of Construction

- Clearing & Grubbing
- Earthwork
- Drainage
- Stormwater Treatment
- Environmental Protection Meas.
- Parking Paving & Marking
- Bus Lane Paving & Marking



Scope of Construction (cont.)

- Electrical & Lighting
- Communications Devices & Cables
- Security Measures
- Guidance Signage
- Regulatory Signage
- Landscaping
- Bus Shelters & Canopies
- Observation Building

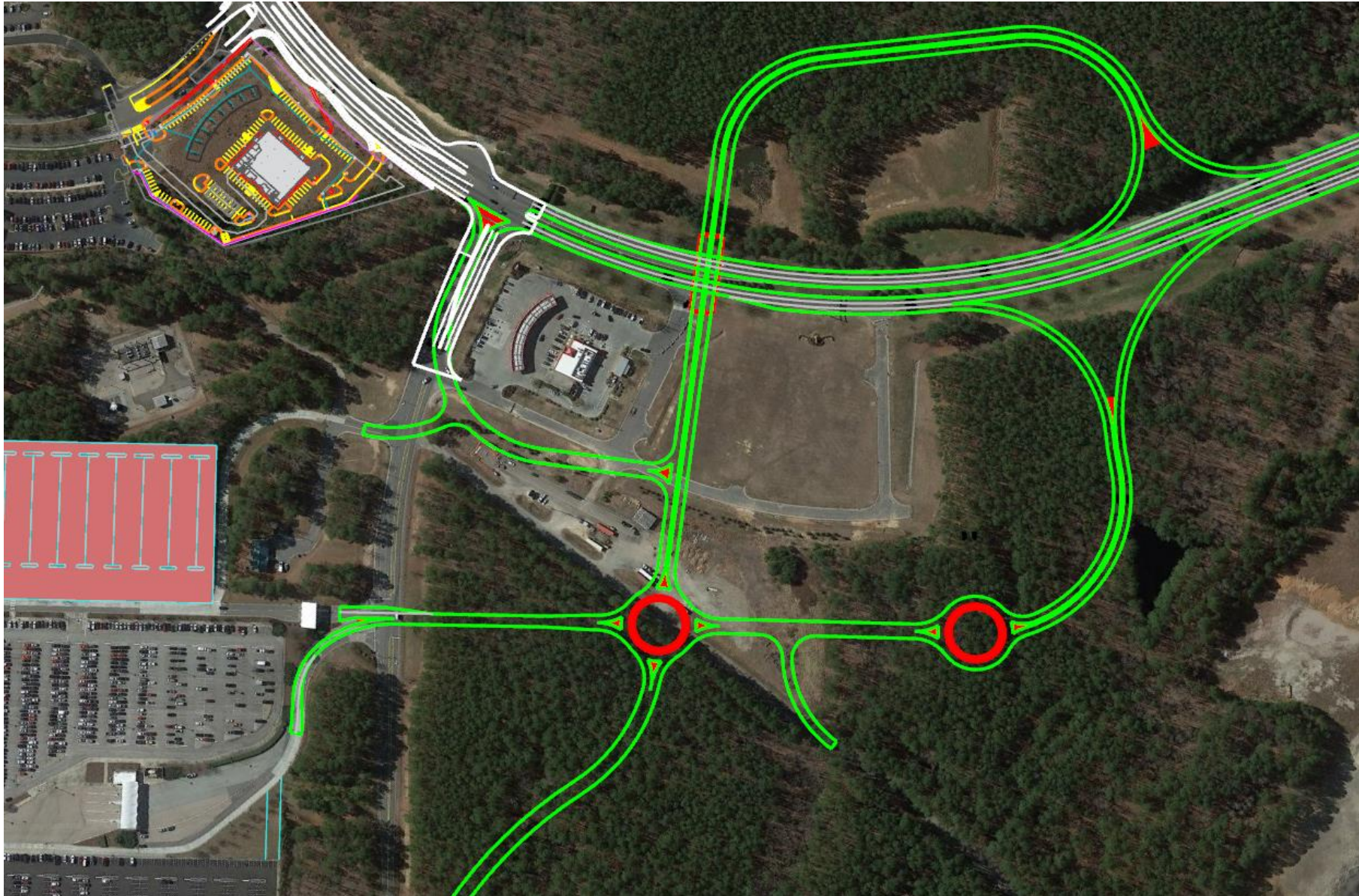
Schedule

- Project will start in Q3 of 2023.
- Phase 1 Completion – 12/31/24
- Project Completion – Fall 2025
- 1st package is clearing and grubbing and will bid early summer.
- 2nd package for paving and lot build out will release early fall.
- 3rd package for public safety building construction spring 2024 bid.



Aviation Parkway/National Guard Drive Interchange

Initial Planning





Scope of Construction

- Clearing & Grubbing
- Earthwork
- Drainage
- Stormwater Treatment
- Environmental Protection Meas.
- Bridge Construction
- Paving
- Bus Lane Paving & Marking



Scope of Construction (cont.)

- Electrical & Lighting
- Communications Devices & Cables
- Security Measures
- Guidance Signage
- Regulatory Signage
- Landscaping
- Utility Relocations

Schedule

- Project is anticipated to start in 2025.
- Anticipated duration is 18 months.

MWSB/DBE Program



Small Business Programs

RDUAA has two programs designed to facilitate the inclusion of minority and women-owned small businesses:

- **Federal Disadvantaged Business Enterprise (DBE)**
 - DBE program applies to federally-assisted contracts
- **RDUAA Minority and Women-owned Small Business (MWSB)**
 - MWSB program applies to non-federal contracts



DBE Certification

- Firms that wish to be DBE certified must apply through the NC Dept. of Transportation
- DBE certification is a federal certification which can take up to 90 days
- DBE certification is the only certification which will be accepted for federally-funded projects



Accepted MWSB Certifications

RDUAA accepts various certifications for the MWSB Program:

- NCDOT – Disadvantaged Business Enterprise – DBE
- SBA 8(a) Business Development Certification – SBA 8(a)
- Women's Business Enterprise National Council – Women-Owned Small Business – WOSB



Opportunity Program

- The projects/programs previously shown are expected to fall under the below program.
- DBE
 - Runway 5L-23R Replacement
 - T2 Landside Expansion Program
- MW SB
 - Park Economy 3 Expansion
 - Aviation Parkway/National Guard Interchange

A photograph of an airport tarmac at dusk or dawn. In the background, a large United Airlines aircraft (N871UA) is parked with its cargo door open. Ground service vehicles, including a white van and a small truck, are positioned near it. To the right, another United aircraft (N652RW) is partially visible. In the foreground, a Delta Connection aircraft (N301PQ) is parked. The word "Questions?" is overlaid in large white text on the left side of the image.

Questions?



Contacts

LaQuiana Bailey “Q”
Minority Business Development Manager
Balfour Beatty
lbailey@balfourbeattyus.com
919-233-5001

Joshua Spells
HUB/Project Coordinator
Right Build International
jspells@rightbuildint.com
919-651-8383